

A9727

Leader in Biomolecular Solutions for Life Science



# CD166/ALCAM Rabbit mAb

Catalog No.: A9727 **Recombinant**

## Basic Information

### Observed MW

100-105kDa

### Calculated MW

65kDa

### Category

SMab Recombinant Monoclonal Antibody

### Applications

WB,ELISA

### Cross-Reactivity

Human,Mouse,Rat

### CloneNo number

ARC1720

## Background

This gene encodes activated leukocyte cell adhesion molecule (ALCAM), also known as CD166 (cluster of differentiation 166), which is a member of a subfamily of immunoglobulin receptors with five immunoglobulin-like domains (VVC2C2C2) in the extracellular domain. This protein binds to T-cell differentiation antigene CD6, and is implicated in the processes of cell adhesion and migration. Multiple alternatively spliced transcript variants encoding different isoforms have been found.

## Recommended Dilutions

WB 1:500 - 1:2000

## Immunogen Information

### Gene ID

214

### Swiss Prot

Q13740

### Immunogen

A synthetic peptide corresponding to a sequence within amino acids 484-583 of human CD166/ALCAM (Q13740).

### Synonyms

MEMD; CD166; CD166/ALCAM

## Contact



[www.abclonal.com](http://www.abclonal.com)

## Product Information

### Source

Rabbit

### Isotype

IgG

### Purification

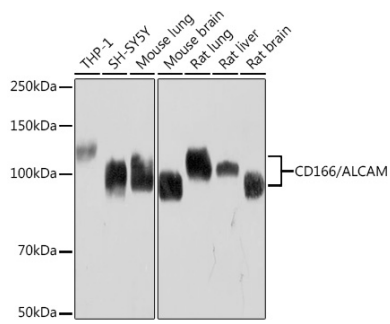
Affinity purification

### Storage

Store at -20°C. Avoid freeze / thaw cycles.

Buffer: PBS with 0.02% sodium azide,0.05% BSA,50% glycerol,pH7.3.

## Validation Data



Western blot analysis of extracts of various cell lines, using CD166/ALCAM Rabbit mAb (A9727) at 1:1000 dilution.

Secondary antibody: HRP Goat Anti-Rabbit IgG (H+L) (AS014) at 1:10000 dilution.

Lysates/proteins: 25µg per lane.

Blocking buffer: 3% nonfat dry milk in TBST.

Detection: ECL Basic Kit (RM00020).

Exposure time: 30s.