

A9709

Leader in Biomolecular Solutions for Life Science



eIF2A Rabbit mAb

Catalog No.: A9709

Recombinant

1 Publications

Basic Information

Observed MW

60kDa

Calculated MW

65kDa

Category

SMab Recombinant Monoclonal Antibody

Applications

WB,IHC-P,ELISA

Cross-Reactivity

Human,Mouse,Rat

CloneNo number

ARC1712

Recommended Dilutions

WB	1:500 - 1:1000
IHC-P	1:50 - 1:200

Contact

 www.abclonal.com

Background

This gene encodes a eukaryotic translation initiation factor that catalyzes the formation of puromycin-sensitive 80 S preinitiation complexes and the poly(U)-directed synthesis of polyphenylalanine at low concentrations of Mg²⁺. This gene should not be confused with eIF2-alpha (EIF2S1, Gene ID: 1965), the alpha subunit of the eIF2 translation initiation complex. Although both of these proteins function in binding initiator tRNA to the 40 S ribosomal subunit, the encoded protein does so in a codon-dependent manner, whereas eIF2 complex requires GTP. Alternative splicing of this gene results in multiple transcript variants encoding different isoforms.

Immunogen Information

Gene ID	Swiss Prot
83939	Q9BY44

Immunogen

A synthetic peptide corresponding to a sequence within amino acids 450-550 of human eIF2A (Q9BY44).

Synonyms

CDA02; EIF-2A; MST089; MSTP004; MSTP089; eIF2A

Product Information

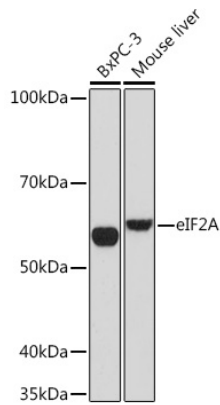
Source	Isotype	Purification
Rabbit	IgG	Affinity purification

Storage

Store at -20°C. Avoid freeze / thaw cycles.

Buffer: PBS with 0.02% sodium azide,0.05% BSA,50% glycerol,pH7.3.

Validation Data



Western blot analysis of various lysates using eIF2A Rabbit mAb (A9709) at 1:1000 dilution.

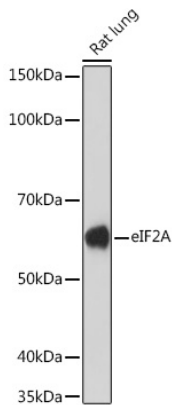
Secondary antibody: HRP Goat Anti-Rabbit IgG (H+L) (AS014) at 1:10000 dilution.

Lysates/proteins: 25µg per lane.

Blocking buffer: 3% nonfat dry milk in TBST.

Detection: ECL Basic Kit (RM00020).

Exposure time: 90s.



Western blot analysis of lysates from Rat lung, using eIF2A Rabbit mAb (A9709) at 1:1000 dilution.

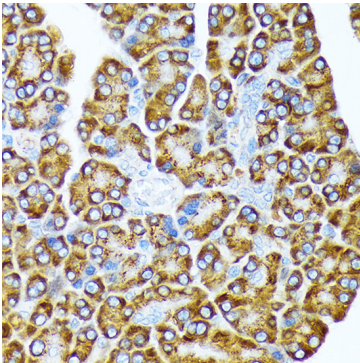
Secondary antibody: HRP Goat Anti-Rabbit IgG (H+L) (AS014) at 1:10000 dilution.

Lysates/proteins: 25µg per lane.

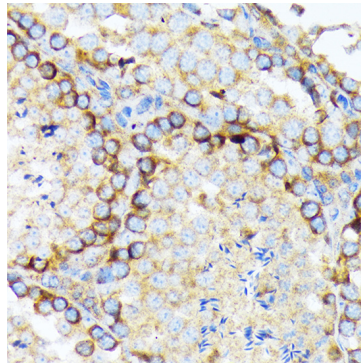
Blocking buffer: 3% nonfat dry milk in TBST.

Detection: ECL Enhanced Kit (RM00021).

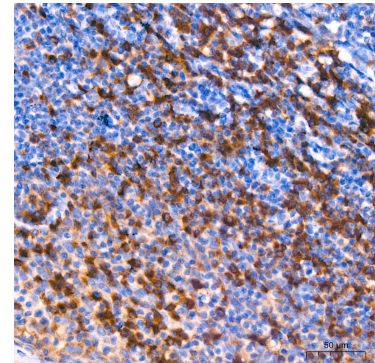
Exposure time: 3min.



Immunohistochemistry analysis of paraffin-embedded Rat pancreas using eIF2A Rabbit mAb (A9709) at dilution of 1:100 (40x lens). Perform microwave antigen retrieval with 10 mM Tris/EDTA buffer pH 9.0 before commencing with IHC staining protocol.

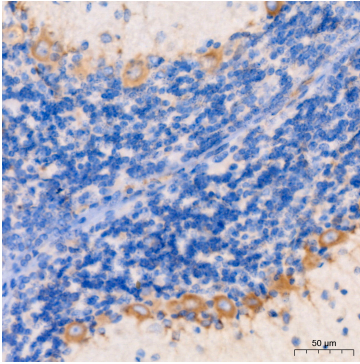


Immunohistochemistry analysis of paraffin-embedded Mouse testis using eIF2A Rabbit mAb (A9709) at dilution of 1:100 (40x lens). Perform microwave antigen retrieval with 10 mM Tris/EDTA buffer pH 9.0 before commencing with IHC staining protocol.

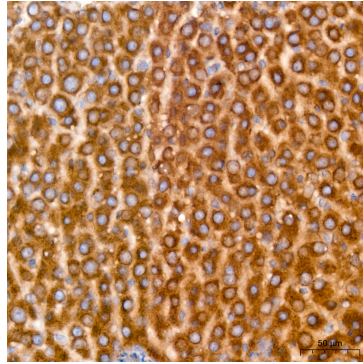


Immunohistochemistry analysis of paraffin-embedded Human tonsil tissue using eIF2A Rabbit mAb (A9709) at a dilution of 1:200 (40x lens). High pressure antigen retrieval was performed with 0.01M Tris-EDTA buffer (pH 9.0) prior to IHC staining.

Validation Data



Immunohistochemistry analysis of paraffin-embedded Rat brain tissue using eIF2A Rabbit mAb (A9709) at a dilution of 1:200 (40x lens). High pressure antigen retrieval was performed with 0.01M Tris-EDTA buffer (pH 9.0) prior to IHC staining.



Immunohistochemistry analysis of paraffin-embedded Rat liver tissue using eIF2A Rabbit mAb (A9709) at a dilution of 1:200 (40x lens). High pressure antigen retrieval was performed with 0.01M Tris-EDTA buffer (pH 9.0) prior to IHC staining.