

AFM Rabbit pAb

Catalog No.: A9686

Basic Information

Observed MW

65kDa

Calculated MW

69kDa

Category

Primary antibody

Applications

WB

Cross-Reactivity

Human

Background

This gene is a member of the albumin gene family, which is comprised of four genes that localize to chromosome 4 in a tandem arrangement. These four genes encode structurally-related serum transport proteins that are known to be evolutionarily related. The protein encoded by this gene is regulated developmentally, expressed in the liver and secreted into the bloodstream.

Recommended Dilutions

WB 1:500 - 1:1000

Immunogen Information

Gene ID

173

Swiss Prot

P43652

Immunogen

A synthetic Peptide of human AFM

Synonyms

ALF; ALB2; ALBA; AFM

Contact

 | www.abclonal.com

Product Information

Source

Rabbit

Isotype

IgG

Purification

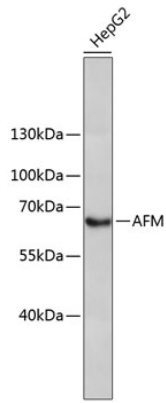
Affinity purification

Storage

Store at 4°C. Avoid freeze / thaw cycles.

Buffer: PBS with 0.02% sodium azide, pH7.3.

Validation Data



Western blot analysis of extracts of HepG2 cells, using AFM antibody (A9686).
Secondary antibody: HRP Goat Anti-Rabbit IgG (H+L) (AS014) at 1:10000 dilution.
Lysates/proteins: 25µg per lane.
Blocking buffer: 3% nonfat dry milk in TBST.