

A9657

Leader in Biomolecular Solutions for Life Science



# $\gamma$ -Tubulin Rabbit mAb

Catalog No.: A9657 **Recombinant** **3 Publications**

## Basic Information

### Observed MW

49kDa

### Calculated MW

51kDa

### Category

SMab Recombinant Monoclonal Antibody

### Applications

WB,IHC-P,IF/ICC,ELISA

### Cross-Reactivity

Human,Mouse,Rat

### CloneNo number

ARC1684

## Background

This gene encodes a member of the tubulin superfamily. The encoded protein localizes to the centrosome where it binds to microtubules as part of a complex referred to as the gamma-tubulin ring complex. The protein mediates microtubule nucleation and is required for microtubule formation and progression of the cell cycle. A pseudogene of this gene is found on chromosome 7.

## Recommended Dilutions

WB	1:500 - 1:1000
IHC-P	1:50 - 1:200
IF/ICC	1:50 - 1:200

## Immunogen Information

### Gene ID

7283

### Swiss Prot

P23258

### Immunogen

Recombinant fusion protein containing a sequence corresponding to amino acids 231-451 of human  $\gamma$ -Tubulin (P23258).

### Synonyms

TUBG; GCP-1; CDCBM4; TUBGCP1;  $\gamma$ -Tubulin

## Contact



[www.abclonal.com](http://www.abclonal.com)

## Product Information

### Source

Rabbit

### Isotype

IgG

### Purification

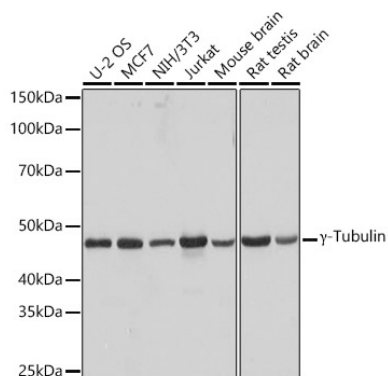
Affinity purification

### Storage

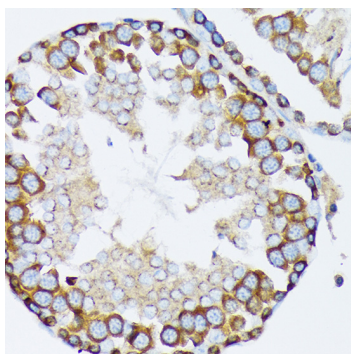
Store at -20°C. Avoid freeze / thaw cycles.

Buffer: PBS with 0.02% sodium azide,0.05% BSA,50% glycerol,pH7.3.

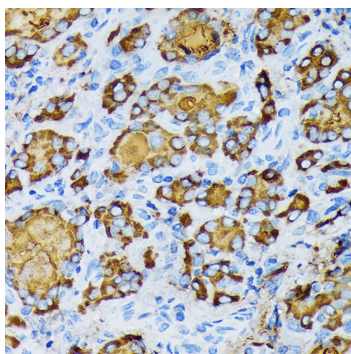
## Validation Data



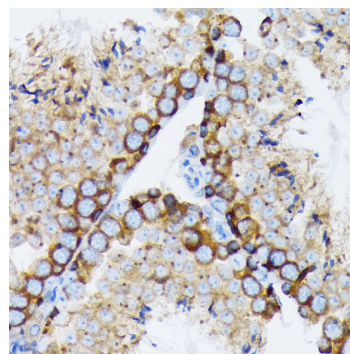
Western blot analysis of various lysates using  $\gamma$ -Tubulin Rabbit mAb (A9657) at 1:1000 dilution. Secondary antibody: HRP Goat Anti-Rabbit IgG (H+L) (AS014) at 1:10000 dilution. Lysates/proteins: 25 $\mu$ g per lane. Blocking buffer: 3% nonfat dry milk in TBST. Detection: ECL Basic Kit (RM00020). Exposure time: 3s.



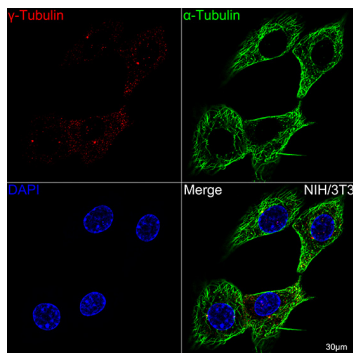
Immunohistochemistry analysis of  $\gamma$ -Tubulin in paraffin-embedded rat testis using  $\gamma$ -Tubulin Rabbit mAb (A9657) at dilution of 1:100 (40x lens). Perform microwave antigen retrieval with 10 mM Tris/EDTA buffer pH 9.0 before commencing with IHC staining protocol.



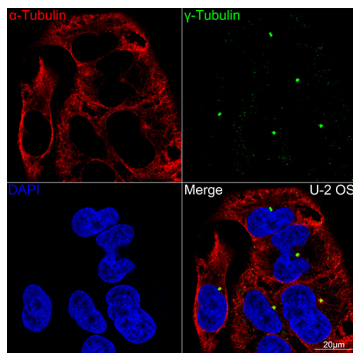
Immunohistochemistry analysis of  $\gamma$ -Tubulin in paraffin-embedded human thyroid cancer using  $\gamma$ -Tubulin Rabbit mAb (A9657) at dilution of 1:100 (40x lens). Perform microwave antigen retrieval with 10 mM Tris/EDTA buffer pH 9.0 before commencing with IHC staining protocol.



Immunohistochemistry analysis of  $\gamma$ -Tubulin in paraffin-embedded mouse testis using  $\gamma$ -Tubulin Rabbit mAb (A9657) at dilution of 1:100 (40x lens). Perform microwave antigen retrieval with 10 mM Tris/EDTA buffer pH 9.0 before commencing with IHC staining protocol.



Confocal imaging of NIH-3T3 cells using  $\gamma$ -Tubulin Rabbit mAb (A9657, dilution 1:100) (Red). The cells were counterstained with Alpha-tubulin (ubiquitous) chain Rabbit mAb (AC039, dilution 1:100) (Green). DAPI was used for nuclear staining (blue). Objective: 60x.



Confocal imaging of U-2 OS cells using  $\gamma$ -Tubulin Rabbit mAb (A9657, dilution 1:100) (Green). The cells were counterstained with Alpha-tubulin (ubiquitous) chain Rabbit mAb (AC039, dilution 1:100) (Red). DAPI was used for nuclear staining (blue). Objective: 60x.