

EHD1 Rabbit pAb

Catalog No.: A9635

Basic Information

Observed MW

61kDa

Calculated MW

61kDa

Category

Primary antibody

Applications

WB

Cross-Reactivity

Human

Background

This gene belongs to a highly conserved gene family encoding EPS15 homology (EH) domain-containing proteins. The protein-binding EH domain was first noted in EPS15, a substrate for the epidermal growth factor receptor. The EH domain has been shown to be an important motif in proteins involved in protein-protein interactions and in intracellular sorting. The protein encoded by this gene is thought to play a role in the endocytosis of IGF1 receptors. Alternatively spliced transcript variants have been found for this gene.

Recommended Dilutions

WB 1:500 - 1:1000

Immunogen Information

Gene ID

10938

Swiss Prot

Q9H4M9

Immunogen

A synthetic Peptide of human EHD1

Synonyms

PAST; PAST1; H-PAST; HPAST1; EHD1

Contact

 | www.abclonal.com

Product Information

Source

Rabbit

Isotype

IgG

Purification

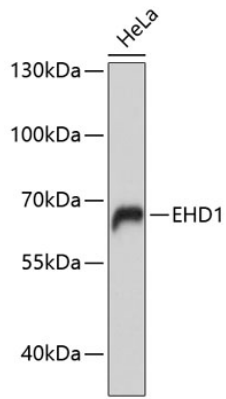
Affinity purification

Storage

Store at 4°C. Avoid freeze / thaw cycles.

Buffer: PBS with 0.02% sodium azide, pH7.3.

Validation Data



Western blot analysis of extracts of HeLa cells, using EHD1 antibody (A9635).
Secondary antibody: HRP Goat Anti-Rabbit IgG (H+L) (AS014) at 1:10000 dilution.
Lysates/proteins: 25 μ g per lane.
Blocking buffer: 3% nonfat dry milk in TBST.