

A9618

Leader in Biomolecular Solutions for Life Science



Caspase-14 Rabbit mAb

Catalog No.: A9618 **Recombinant**

Basic Information

Observed MW

17kDa/28kDa/35kDa

Calculated MW

28kDa

Category

SMab Recombinant Monoclonal Antibody

Applications

WB,ELISA

Cross-Reactivity

Human,Mouse,Rat

CloneNo number

ARC1661

Background

This gene encodes a member of the cysteine-aspartic acid protease (caspase) family. Sequential activation of caspases plays a central role in the execution-phase of cell apoptosis. Caspases exist as inactive proenzymes which undergo proteolytic processing at conserved aspartic residues to produce two subunits, large and small, that dimerize to form the active enzyme. This caspase has been shown to be processed and activated by caspase 8 and caspase 10 in vitro, and by anti-Fas agonist antibody or TNF-related apoptosis inducing ligand in vivo. The expression and processing of this caspase may be involved in keratinocyte terminal differentiation, which is important for the formation of the skin barrier.

Recommended Dilutions

WB 1:500 - 1:1000

Immunogen Information

Gene ID

23581

Swiss Prot

P31944

Immunogen

Recombinant fusion protein containing a sequence corresponding to amino acids 100-200 of human Caspase-14 (P31944).

Synonyms

ARCI12; Caspase-14

Contact



www.abclonal.com

Product Information

Source

Rabbit

Isotype

IgG

Purification

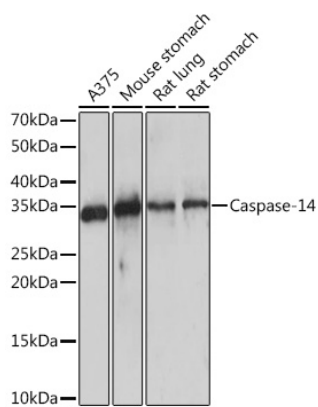
Affinity purification

Storage

Store at -20°C. Avoid freeze / thaw cycles.

Buffer: PBS with 0.02% sodium azide,0.05% BSA,50% glycerol,pH7.3.

Validation Data



Western blot analysis of extracts of various cell lines, using Caspase-14 Rabbit mAb (A9618) at 1:1000 dilution.
Secondary antibody: HRP Goat Anti-Rabbit IgG (H+L) (AS014) at 1:10000 dilution.
Lysates/proteins: 25µg per lane.
Blocking buffer: 3% nonfat dry milk in TBST.
Detection: ECL Enhanced Kit (RM00021).
Exposure time: 10s.

Western blot analysis of extracts of various cell lines, using Caspase-14 Rabbit mAb (A9618) at 1:1000 dilution.
Secondary antibody: HRP Goat Anti-Rabbit IgG (H+L) (AS014) at 1:10000 dilution.
Lysates/proteins: 25µg per lane.
Blocking buffer: 3% nonfat dry milk in TBST.
Detection: ECL Enhanced Kit (RM00021).
Exposure time: 30s.

