

# GABARAPL2 Rabbit mAb

Catalog No.: A9585 **Recombinant**

## Basic Information

---

### Catalog No.

A9585

### Observed MW

16KDa

### Calculated MW

14kDa

### Category

Primary antibody

### Applications

WB

### Cross-Reactivity

Human, Mouse, Rat

## Background

---

## Recommended Dilutions

---

**WB** 1:500 - 1:2000

## Immunogen Information

---

### Gene ID

11345

### Swiss Prot

P60520

### Immunogen

A synthesized peptide derived from human GABARAPL2

### Synonyms

ATG8; ATG8C; GATE-16; GATE16; GEF-2; GEF2

## Contact

---

 | [www.abclonal.com](http://www.abclonal.com)

## Product Information

---

### Source

Rabbit

### Isotype

IgG

### Purification

Affinity purification

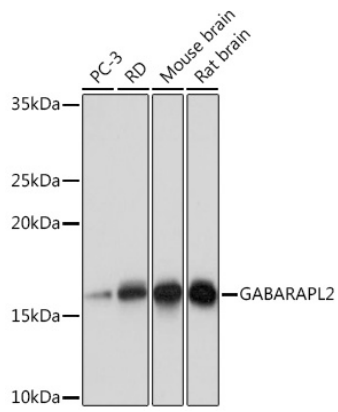
### Storage

Store at -20°C. Avoid freeze / thaw cycles.

Buffer: PBS with 0.02% sodium azide, 0.05% BSA, 50% glycerol, pH7.3.

## Validation Data

---



Western blot analysis of extracts of various cell lines, using GABARAPL2 Rabbit mAb (A9585) at 1:1000 dilution.

Secondary antibody: HRP Goat Anti-Rabbit IgG (H+L) (AS014) at 1:10000 dilution.

Lysates/proteins: 25ug per lane.

Blocking buffer: 3% nonfat dry milk in TBST.

Detection: ECL Basic Kit (RM00020).

Exposure time: 10s.