

A9436

Leader in Biomolecular Solutions for Life Science



ABCA2 Rabbit pAb

Catalog No.: A9436

Basic Information

Observed MW

270kDa

Calculated MW

270kDa

Category

Polyclonal Antibody

Applications

WB

Cross-Reactivity

Human

Background

The membrane-associated protein encoded by this gene is a member of the superfamily of ATP-binding cassette (ABC) transporters. ABC proteins transport various molecules across extra- and intracellular membranes. ABC genes are divided into seven distinct subfamilies (ABC1, MDR/TAP, MRP, ALD, OABP, GCN20, White). This protein is a member of the ABC1 subfamily. Members of the ABC1 subfamily comprise the only major ABC subfamily found exclusively in multicellular eukaryotes. This protein is highly expressed in brain tissue and may play a role in macrophage lipid metabolism and neural development. Two transcript variants encoding different isoforms have been found for this gene.

Recommended Dilutions

WB 1:500 - 1:1000

Immunogen Information

Gene ID

20

Swiss Prot

Q9BZC7

Immunogen

A synthetic peptide of human ABCA2

Synonyms

ABC2; IDPOGSA; ABCA2

Contact



www.abclonal.com

Product Information

Source

Rabbit

Isotype

IgG

Purification

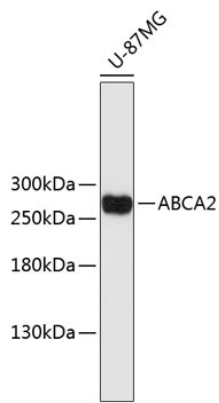
Affinity purification

Storage

Store at 4°C. Avoid freeze / thaw cycles.

Buffer: PBS with 0.02% sodium azide, pH7.3.

Validation Data



Western blot analysis of extracts of U-87MG cells, using ABCA2 antibody (A9436).
Secondary antibody: HRP Goat Anti-Rabbit IgG (H+L) (AS014) at 1:10000 dilution.
Lysates/proteins: 25µg per lane.
Blocking buffer: 3% nonfat dry milk in TBST.