

A9196

Leader in Biomolecular Solutions for Life Science



# CaMKII delta Rabbit mAb

Catalog No.: A9196 **Recombinant** **1 Publications**

## Basic Information

### Observed MW

50kDa

### Calculated MW

56kDa

### Category

SMab Recombinant Monoclonal Antibody

### Applications

WB,IF/ICC,ELISA

### Cross-Reactivity

Human,Mouse,Rat

### CloneNo number

ARC1473

## Background

The product of this gene belongs to the serine/threonine protein kinase family and to the Ca(2+)/calmodulin-dependent protein kinase subfamily. Calcium signaling is crucial for several aspects of plasticity at glutamatergic synapses. In mammalian cells, the enzyme is composed of four different chains: alpha, beta, gamma, and delta. The product of this gene is a delta chain. Alternative splicing results in multiple transcript variants encoding distinct isoforms. Distinct isoforms of this chain have different expression patterns.

## Recommended Dilutions

WB	1:500 - 1:1000
IF/ICC	1:50 - 1:200

## Immunogen Information

### Gene ID

817

### Swiss Prot

Q13557

### Immunogen

A synthetic peptide corresponding to a sequence within amino acids 1-100 of human CaMKII delta (Q13557).

### Synonyms

CAMKD; CaMKII delta

## Contact



[www.abclonal.com](http://www.abclonal.com)

## Product Information

### Source

Rabbit

### Isotype

IgG

### Purification

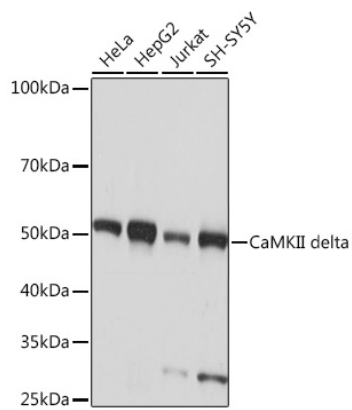
Affinity purification

### Storage

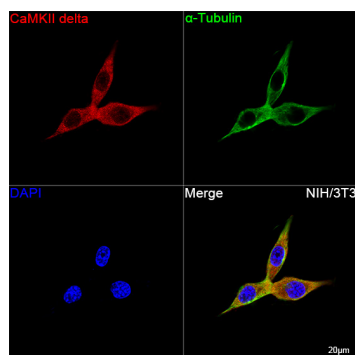
Store at -20°C. Avoid freeze / thaw cycles.

Buffer: PBS with 0.02% sodium azide,0.05% BSA,50% glycerol,pH7.3.

## Validation Data



Western blot analysis of various lysates using CaMKII delta Rabbit mAb (A9196) at 1:1000 dilution. Secondary antibody: HRP Goat Anti-Rabbit IgG (H+L) (AS014) at 1:10000 dilution. Lysates/proteins: 25µg per lane. Blocking buffer: 3% nonfat dry milk in TBST. Detection: ECL Basic Kit (RM00020). Exposure time: 10s.



Confocal imaging of NIH/3T3 cells using CaMKII delta Rabbit mAb (A9196), dilution 1:100 followed by a further incubation with Cy3 Goat Anti-Rabbit IgG (H+L) (AS007, dilution 1:500) (Red). The cells were counterstained with  $\alpha$ -Tubulin Mouse mAb (AC012, dilution 1:400) followed by incubation with ABflo® 488-conjugated Goat Anti-Mouse IgG (H+L) Ab (AS076, dilution 1:500) (Green). DAPI was used for nuclear staining (Blue). Objective: 100x.