

A9151

Leader in Biomolecular Solutions for Life Science



14-3-3 alpha/beta Rabbit mAb

Catalog No.: A9151 **Recombinant**

Basic Information

Observed MW

28kDa

Calculated MW

28kDa

Category

SMab Recombinant Monoclonal Antibody

Applications

WB, ELISA

Cross-Reactivity

Human, Mouse, Rat

CloneNo number

ARC1453

Background

This gene encodes a protein belonging to the 14-3-3 family of proteins, members of which mediate signal transduction by binding to phosphoserine-containing proteins. This highly conserved protein family is found in both plants and mammals. The encoded protein has been shown to interact with RAF1 and CDC25 phosphatases, suggesting that it may play a role in linking mitogenic signaling and the cell cycle machinery. Two transcript variants, which encode the same protein, have been identified for this gene.

Recommended Dilutions

WB 1:500 - 1:1000

Immunogen Information

Gene ID

7529

Swiss Prot

P31946

Immunogen

A synthetic peptide corresponding to a sequence within amino acids 147-246 of human 14-3-3 alpha/beta (P31946).

Synonyms

HS1; GW128; YWHAA; KCIP-1; HEL-S-1; 14-3-3 alpha/beta

Contact



www.abclonal.com

Product Information

Source

Rabbit

Isotype

IgG

Purification

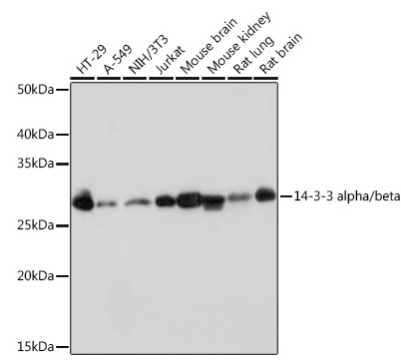
Affinity purification

Storage

Store at -20°C. Avoid freeze / thaw cycles.

Buffer: PBS with 0.02% sodium azide, 0.05% BSA, 50% glycerol, pH 7.3.

Validation Data



Western blot analysis of extracts of various cell lines, using 14-3-3 alpha/beta Rabbit mAb (A9151) at 1:1000 dilution.
Secondary antibody: HRP Goat Anti-Rabbit IgG (H+L) (AS014) at 1:10000 dilution.
Lysates/proteins: 25µg per lane.
Blocking buffer: 3% nonfat dry milk in TBST.
Detection: ECL Basic Kit (RM00020).
Exposure time: 1s.