

A9135

Leader in Biomolecular Solutions for Life Science



ABCE1 Rabbit mAb

Catalog No.: A9135 **Recombinant**

Basic Information

Observed MW

67kDa

Calculated MW

67kDa

Category

SMab Recombinant Monoclonal Antibody

Applications

WB,IF/ICC,ELISA

Cross-Reactivity

Human,Mouse

CloneNo number

ARC1445

Background

The protein encoded by this gene is a member of the superfamily of ATP-binding cassette (ABC) transporters. ABC proteins transport various molecules across extra- and intra-cellular membranes. ABC genes are divided into seven distinct subfamilies (ABC1, MDR/TAP, MRP, ALD, OABP, GCN20, White). This protein is a member of the OABP subfamily. Alternatively referred to as the RNase L inhibitor, this protein functions to block the activity of ribonuclease L. Activation of ribonuclease L leads to inhibition of protein synthesis in the 2-5A/RNase L system, the central pathway for viral interferon action. Two transcript variants encoding the same protein have been found for this gene.

Recommended Dilutions

WB	1:500 - 1:1000
IF/ICC	1:50 - 1:200

Immunogen Information

Gene ID	Swiss Prot
6059	P61221

Immunogen

A synthetic peptide corresponding to a sequence within amino acids 500-599 of human ABCE1 (NP_002931.2).

Synonyms

RLI; OABP; RLI1; ABC38; RNS4I; RNASEL1; RNASELI; ABCE1

Contact



www.abclonal.com

Product Information

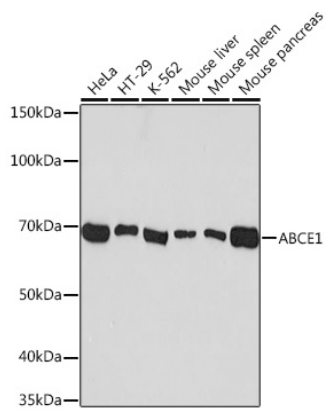
Source	Isotype	Purification
Rabbit	IgG	Affinity purification

Storage

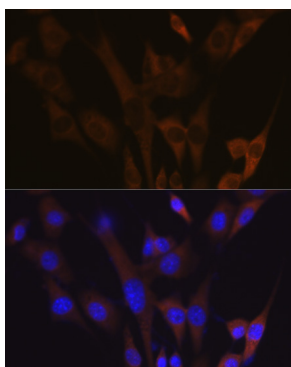
Store at -20°C. Avoid freeze / thaw cycles.

Buffer: PBS with 0.02% sodium azide,0.05% BSA,50% glycerol,pH7.3.

Validation Data



Western blot analysis of extracts of various cell lines, using ABCE1 Rabbit mAb (A9135) at 1:1000 dilution. Secondary antibody: HRP Goat Anti-Rabbit IgG (H+L) (AS014) at 1:10000 dilution. Lysates/proteins: 25 μ g per lane. Blocking buffer: 3% nonfat dry milk in TBST. Detection: ECL Basic Kit (RM00020). Exposure time: 60s.



Immunofluorescence analysis of NIH-3T3 cells using ABCE1 Rabbit mAb (A9135) at dilution of 1:100 (40x lens). Blue: DAPI for nuclear staining.