

A8932

Leader in Biomolecular Solutions for Life Science



APPL1 Rabbit mAb

Catalog No.: A8932 **Recombinant**

Basic Information

Observed MW

90kDa

Calculated MW

80kDa

Category

SMab Recombinant Monoclonal Antibody

Applications

WB,ELISA

Cross-Reactivity

Human,Mouse,Rat

CloneNo number

ARC1356

Background

The protein encoded by this gene has been shown to be involved in the regulation of cell proliferation, and in the crosstalk between the adiponectin signalling and insulin signalling pathways. The encoded protein binds many other proteins, including RAB5A, DCC, AKT2, PIK3CA, adiponectin receptors, and proteins of the NuRD/MeCP1 complex. This protein is found associated with endosomal membranes, but can be released by EGF and translocated to the nucleus.

Recommended Dilutions

WB 1:500 - 1:1000

Immunogen Information

Gene ID

26060

Swiss Prot

Q9UKG1

Immunogen

A synthetic peptide corresponding to a sequence within amino acids 350-450 of human APPL1 (Q9UKG1).

Synonyms

APPL; MODY14; DIP13alpha; APPL1

Contact



www.abclonal.com

Product Information

Source

Rabbit

Isotype

IgG

Purification

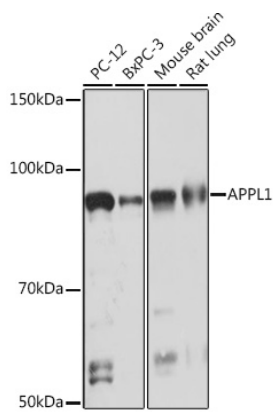
Affinity purification

Storage

Store at -20°C. Avoid freeze / thaw cycles.

Buffer: PBS with 0.02% sodium azide,0.05% BSA,50% glycerol,pH7.3.

Validation Data



Western blot analysis of extracts of various cell lines, using APPL1 Rabbit mAb (A8932) at 1:1000 dilution.

Secondary antibody: HRP Goat Anti-Rabbit IgG (H+L) (AS014) at 1:10000 dilution.

Lysates/proteins: 25µg per lane.

Blocking buffer: 3% nonfat dry milk in TBST.

Detection: ECL Basic Kit (RM00020).

Exposure time: 30s.