

WDR1 Rabbit pAb

Catalog No.: A8923

Basic Information

Observed MW

57kDa

Calculated MW

66kDa

Category

Primary antibody

Applications

WB

Cross-Reactivity

Human

Background

This gene encodes a protein containing 9 WD repeats. WD repeats are approximately 30- to 40-amino acid domains containing several conserved residues, mostly including a trp-asp at the C-terminal end. WD domains are involved in protein-protein interactions. The encoded protein may help induce the disassembly of actin filaments. Two transcript variants encoding different isoforms have been found for this gene.

Recommended Dilutions

WB 1:500 - 1:1000

Immunogen Information

Gene ID

9948

Swiss Prot

O75083

Immunogen

A synthetic Peptide of human WDR1

Synonyms

AIP1; PFITS; NORI-1; HEL-S-52; WDR1

Contact

 | www.abclonal.com

Product Information

Source

Rabbit

Isotype

IgG

Purification

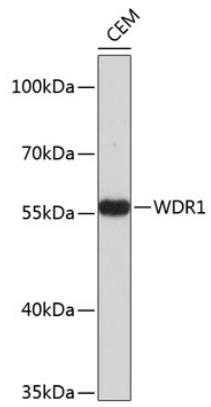
Affinity purification

Storage

Store at 4°C. Avoid freeze / thaw cycles.

Buffer: PBS with 0.02% sodium azide, pH7.3.

Validation Data



Western blot analysis of extracts of CEM cells, using WDR1 antibody (A8923).
Secondary antibody: HRP Goat Anti-Rabbit IgG (H+L) (AS014) at 1:10000 dilution.
Lysates/proteins: 25µg per lane.
Blocking buffer: 3% nonfat dry milk in TBST.