

BATF Rabbit pAb

Catalog No.: A8907

Basic Information

Observed MW

15kDa

Calculated MW

14kDa

Category

Primary antibody

Applications

WB

Cross-Reactivity

Human

Background

The protein encoded by this gene is a nuclear basic leucine zipper protein that belongs to the AP-1/ATF superfamily of transcription factors. The leucine zipper of this protein mediates dimerization with members of the Jun family of proteins. This protein is thought to be a negative regulator of AP-1/ATF transcriptional events.

Recommended Dilutions

WB 1:500 - 1:1000

Immunogen Information

Gene ID

10538

Swiss Prot

Q16520

Immunogen

A synthetic Peptide of human BATF

Synonyms

SFA2; B-ATF; BATF1; SFA-2; BATF

Contact

 | www.abclonal.com

Product Information

Source

Rabbit

Isotype

IgG

Purification

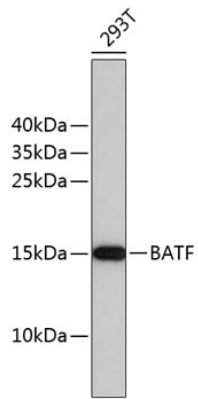
Affinity purification

Storage

Store at 4°C. Avoid freeze / thaw cycles.

Buffer: PBS with 0.02% sodium azide, pH7.3.

Validation Data



Western blot analysis of extracts of 293T cells, using BATF antibody (A8907).
Secondary antibody: HRP Goat Anti-Rabbit IgG (H+L) (AS014) at 1:10000 dilution.
Lysates/proteins: 25µg per lane.
Blocking buffer: 3% nonfat dry milk in TBST.