

# Calpain 1 Rabbit mAb

Catalog No.: A8710 **Recombinant** **2 Publications**

## Basic Information

### Observed MW

75kDa

### Calculated MW

82kDa

### Category

Primary antibody

### Applications

ELISA, WB, IF/ICC

### Cross-Reactivity

Human, Mouse, Rat

### CloneNo number

ARC1272

## Recommended Dilutions

<b>WB</b>	1:500 -1:1000
<b>IF/ICC</b>	1:50 -1:200

## Contact

 | [www.abclonal.com](http://www.abclonal.com)

## Background

The calpains, calcium-activated neutral proteases, are nonlysosomal, intracellular cysteine proteases. The mammalian calpains include ubiquitous, stomach-specific, and muscle-specific proteins. The ubiquitous enzymes consist of heterodimers with distinct large, catalytic subunits associated with a common small, regulatory subunit. This gene encodes the large subunit of the ubiquitous enzyme, calpain 1. Several transcript variants encoding two different isoforms have been found for this gene.

## Immunogen Information

<b>Gene ID</b>	<b>Swiss Prot</b>
823	P07384

### Immunogen

A synthetic peptide corresponding to a sequence within amino acids 100-200 of human Calpain 1 (P07384).

### Synonyms

CANP; muCL; CANP1; SPG76; CANPL1; muCANP; Calpain 1

## Product Information

<b>Source</b>	<b>Isotype</b>	<b>Purification</b>
Rabbit	IgG	Affinity purification

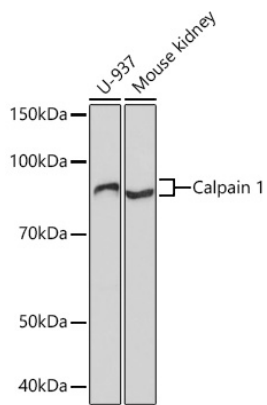
### Storage

Store at -20°C. Avoid freeze / thaw cycles.

Buffer: PBS with 0.02% sodium azide, 0.05% BSA, 50% glycerol, pH7.3.

## Validation Data

---



Western blot analysis of extracts of various cell lines, using Calpain 1 Rabbit mAb (A8710) at 1:1000 dilution.

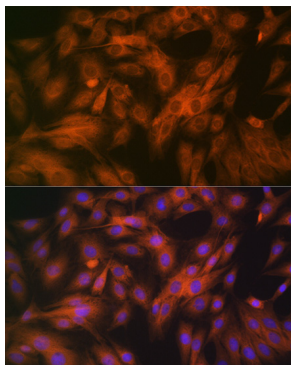
Secondary antibody: HRP Goat Anti-Rabbit IgG (H+L) (AS014) at 1:10000 dilution.

Lysates/proteins: 25µg per lane.

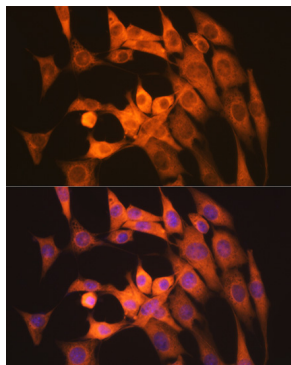
Blocking buffer: 3% nonfat dry milk in TBST.

Detection: ECL Basic Kit (RM00020).

Exposure time: 3min.



Immunofluorescence analysis of C6 cells using Calpain 1 Rabbit mAb (A8710) at dilution of 1:100 (40x lens). Blue: DAPI for nuclear staining.



Immunofluorescence analysis of NIH/3T3 cells using Calpain 1 Rabbit mAb (A8710) at dilution of 1:100 (40x lens). Blue: DAPI for nuclear staining.