

A8659

Leader in Biomolecular Solutions for Life Science



ADM Rabbit pAb

Catalog No.: A8659 **1 Publications**

Basic Information

Observed MW

20kDa

Calculated MW

20kDa

Category

Polyclonal Antibody

Applications

WB,ELISA

Cross-Reactivity

Mouse

Background

The protein encoded by this gene is a prehormone which is cleaved to form two biologically active peptides, adrenomedullin and proadrenomedullin N-terminal 20 peptide. Adrenomedullin is a 52 aa peptide with several functions, including vasodilation, regulation of hormone secretion, promotion of angiogenesis, and antimicrobial activity. The antimicrobial activity is antibacterial, as the peptide has been shown to kill E. coli and S. aureus at low concentration.

Recommended Dilutions

WB 1:500 - 1:2000

Immunogen Information

Gene ID

133

Swiss Prot

P35318

Immunogen

A synthetic peptide corresponding to a sequence within amino acids 50-150 of human ADM (NP_001115.1).

Synonyms

AM; PAMP; ADM

Contact



www.abclonal.com

Product Information

Source

Rabbit

Isotype

IgG

Purification

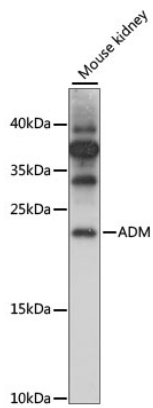
Affinity purification

Storage

Store at -20°C. Avoid freeze / thaw cycles.

Buffer: PBS with 0.01% thimerosal, 50% glycerol, pH 7.3.

Validation Data



Western blot analysis of lysates from Mouse kidney, using ADM Rabbit pAb (A8659) at 1:1000 dilution.
Secondary antibody: HRP Goat Anti-Rabbit IgG (H+L) (AS014) at 1:10000 dilution.
Lysates/proteins: 25 μ g per lane.
Blocking buffer: 3% nonfat dry milk in TBST.
Detection: ECL Basic Kit (RM00020).
Exposure time: 15s.