

A8536

Leader in Biomolecular Solutions for Life Science



Aggrecan Rabbit pAb

Catalog No.: A8536 **23 Publications**

Basic Information

Observed MW

Refer to figures

Calculated MW

261kDa

Category

Polyclonal Antibody

Applications

IHC-P,ELISA

Cross-Reactivity

Rat

Background

This gene is a member of the aggrecan/versican proteoglycan family. The encoded protein is an integral part of the extracellular matrix in cartilagenous tissue and it withstands compression in cartilage. Mutations in this gene may be involved in skeletal dysplasia and spinal degeneration. Multiple alternatively spliced transcript variants that encode different protein isoforms have been observed in this gene.

Recommended Dilutions

IHC-P 1:50 - 1:200

Immunogen Information

Gene ID

176

Swiss Prot

P16112

Immunogen

Recombinant fusion protein containing a sequence corresponding to amino acids 420-575 of human Aggrecan (NP_037359.3).

Synonyms

AGC1; SEDK; AGCAN; CSPG1; MSK16; CSPGCP; SSOAOD; Aggrecan

Contact

 www.abclonal.com

Product Information

Source

Rabbit

Isotype

IgG

Purification

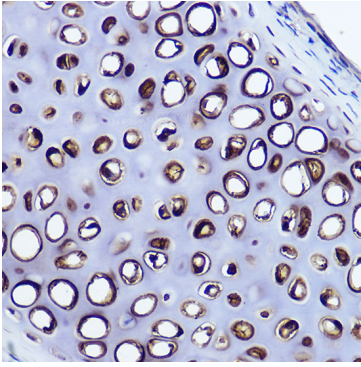
Affinity purification

Storage

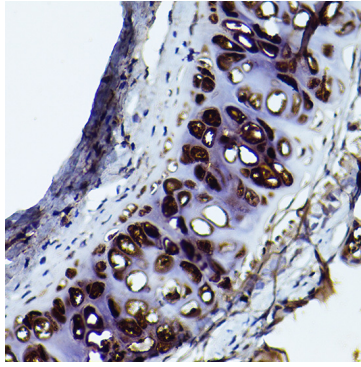
Store at -20°C. Avoid freeze / thaw cycles.

Buffer: PBS with 0.05% proclin300,50% glycerol,pH7.3.

Validation Data



Immunohistochemistry analysis of paraffin-embedded Mouse cartilage using Aggrecan Rabbit pAb (A8536) at dilution of 1:50 (40x lens). Perform high pressure antigen retrieval with 10 mM citrate buffer pH 6.0 before commencing with IHC staining protocol.



Immunohistochemistry analysis of paraffin-embedded Rat cartilage using Aggrecan Rabbit pAb (A8536) at dilution of 1:50 (40x lens). Perform high pressure antigen retrieval with 10 mM citrate buffer pH 6.0 before commencing with IHC staining protocol.