

A8302

Leader in Biomolecular Solutions for Life Science



Xanthine Oxidase (XDH) Rabbit pAb

Catalog No.: A8302 **1 Publications**

Basic Information

Observed MW

146kDa

Calculated MW

146kDa

Category

Polyclonal Antibody

Applications

WB,FC

Cross-Reactivity

Human,Mouse

Background

Xanthine dehydrogenase belongs to the group of molybdenum-containing hydroxylases involved in the oxidative metabolism of purines. The encoded protein has been identified as a moonlighting protein based on its ability to perform mechanistically distinct functions. Xanthine dehydrogenase can be converted to xanthine oxidase by reversible sulfhydryl oxidation or by irreversible proteolytic modification. Defects in xanthine dehydrogenase cause xanthinuria, may contribute to adult respiratory stress syndrome, and may potentiate influenza infection through an oxygen metabolite-dependent mechanism.

Recommended Dilutions

WB	1:500 - 1:2000
FC	1:20 - 1:50

Immunogen Information

Gene ID

7498

Swiss Prot

P47989

Immunogen

A synthetic peptide of human Xanthine Oxidase (Xanthine Oxidase (XDH))

Synonyms

XO; XOR; XAN1; Xanthine Oxidase (XDH)

Contact



www.abclonal.com

Product Information

Source

Rabbit

Isotype

IgG

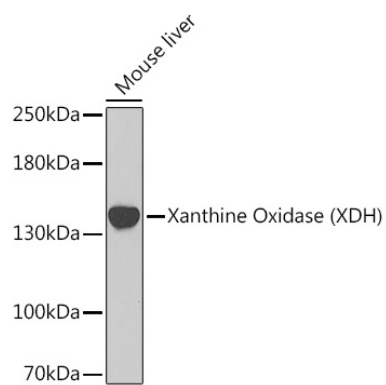
Purification

Affinity purification

Storage

Store at 4°C. Avoid freeze / thaw cycles.
Buffer: PBS with 0.02% sodium azide,pH7.3.

Validation Data



Western blot analysis of extracts of mouse liver, using Xanthine Oxidase (Xanthine Oxidase (XDH)) antibody (A8302).

Secondary antibody: HRP Goat Anti-Rabbit IgG (H+L) (AS014) at 1:10000 dilution.

Lysates/proteins: 25µg per lane.

Blocking buffer: 3% nonfat dry milk in TBST.