

A8081

Leader in Biomolecular Solutions for Life Science



ADH1C Rabbit pAb

Catalog No.: A8081 **5 Publications**

Basic Information

Observed MW

45kDa

Calculated MW

40kDa

Category

Polyclonal Antibody

Applications

WB,IHC-P,ELISA

Cross-Reactivity

Human,Mouse,Rat

Background

This gene encodes class I alcohol dehydrogenase, gamma subunit, which is a member of the alcohol dehydrogenase family. Members of this enzyme family metabolize a wide variety of substrates, including ethanol, retinol, other aliphatic alcohols, hydroxysteroids, and lipid peroxidation products. Class I alcohol dehydrogenase, consisting of several homo- and heterodimers of alpha, beta, and gamma subunits, exhibits high activity for ethanol oxidation to acetaldehyde, thus playing a major role in ethanol catabolism. Three genes encoding alpha, beta and gamma subunits are tandemly organized in a genomic segment as a gene cluster. An association between ADH1C polymorphism and alcohol dependence has not been established.

Recommended Dilutions

WB	1:500 - 1:2000
IHC-P	1:50 - 1:200

Immunogen Information

Gene ID	Swiss Prot
126	P00326

Immunogen

Recombinant fusion protein containing a sequence corresponding to amino acids 1-375 of human ADH1C (NP_000660.1).

Synonyms

ADH3; ADH1C

Contact

 www.abclonal.com

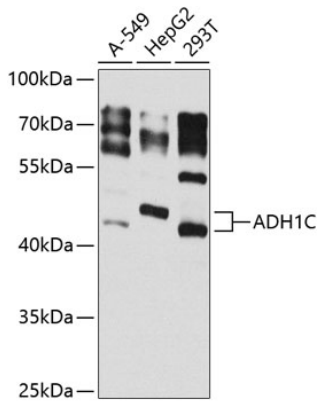
Product Information

Source	Isotype	Purification
Rabbit	IgG	Affinity purification

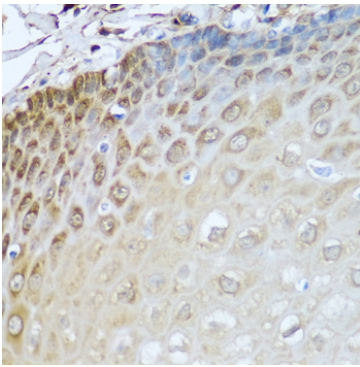
Storage

Store at -20°C. Avoid freeze / thaw cycles.
Buffer: PBS with 0.02% sodium azide,50% glycerol,pH7.3.

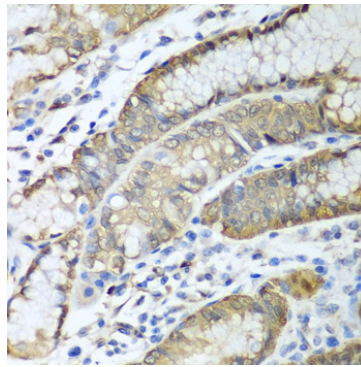
Validation Data



Western blot analysis of various lysates using ADH1C Rabbit pAb (A8081) at 1:1000 dilution. Secondary antibody: HRP Goat Anti-Rabbit IgG (H+L) (AS014) at 1:10000 dilution. Lysates/proteins: 25µg per lane. Blocking buffer: 3% nonfat dry milk in TBST. Detection: ECL Enhanced Kit (RM00021). Exposure time: 10s.



Immunohistochemistry analysis of paraffin-embedded Human esophagus using ADH1C Rabbit pAb (A8081) at dilution of 1:100 (40x lens). Perform microwave antigen retrieval with 10 mM PBS buffer pH 7.2 before commencing with IHC staining protocol.



Immunohistochemistry analysis of paraffin-embedded Human stomach using ADH1C Rabbit pAb (A8081) at dilution of 1:100 (40x lens). Perform microwave antigen retrieval with 10 mM PBS buffer pH 7.2 before commencing with IHC staining protocol.