

SOCS1 Rabbit pAb

Catalog No.: A7754 **5 Publications**

Basic Information

Catalog No.

A7754

Observed MW

23KDa

Calculated MW

23kDa

Category

Primary antibody

Applications

WB, IHC, IF

Cross-Reactivity

Human, Mouse, Rat

Recommended Dilutions

WB	1:500 - 1:2000
IHC	1:50 - 1:200
IF	1:50 - 1:200

Contact

 | www.abclonal.com

Background

This gene encodes a member of the STAT-induced STAT inhibitor (SSI), also known as suppressor of cytokine signaling (SOCS), family. SSI family members are cytokine-inducible negative regulators of cytokine signaling. The expression of this gene can be induced by a subset of cytokines, including IL2, IL3 erythropoietin (EPO), CSF2/GM-CSF, and interferon (IFN)-gamma. The protein encoded by this gene functions downstream of cytokine receptors, and takes part in a negative feedback loop to attenuate cytokine signaling. Knockout studies in mice suggested the role of this gene as a modulator of IFN-gamma action, which is required for normal postnatal growth and survival.

Immunogen Information

Gene ID	Swiss Prot
8651	O15524

Immunogen

Recombinant fusion protein containing a sequence corresponding to amino acids 1-211 of human SOCS1 (NP_003736.1).

Synonyms

SOCS1; CIS1; CISH1; JAB; SOCS-1; SSI-1; SSI1; TIP3; TIP-3

Product Information

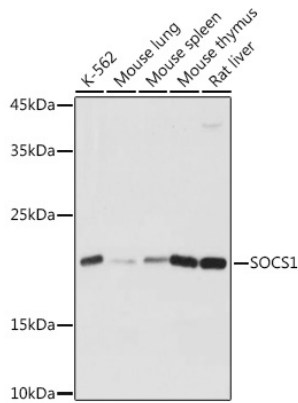
Source	Isotype	Purification
Rabbit	IgG	Affinity purification

Storage

Store at -20°C. Avoid freeze / thaw cycles.

Buffer: PBS with 0.02% sodium azide, 50% glycerol, pH7.3.

Validation Data



Western blot analysis of extracts of various cell lines, using SOCS1 antibody (A7754) at 1:1000 dilution.

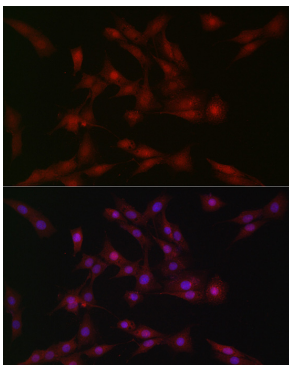
Secondary antibody: HRP Goat Anti-Rabbit IgG (H+L) (AS014) at 1:10000 dilution.

Lysates/proteins: 25ug per lane.

Blocking buffer: 3% nonfat dry milk in TBST.

Detection: ECL Basic Kit (RM00020).

Exposure time: 1s.



Immunofluorescence analysis of PC-12 cells using SOCS1 Rabbit pAb (A7754) at dilution of 1:100 (40x lens). Blue: DAPI for nuclear staining.