

A7553

Leader in Biomolecular Solutions for Life Science



## EPAS1/HIF2 $\alpha$ Rabbit pAb

Catalog No.: A7553

11 Publications

### Basic Information

#### Observed MW

120kDa

#### Calculated MW

96kDa

#### Category

Mouse Monoclonal Antibody

#### Applications

WB,IHC-P,IF/ICC,ELISA

#### Cross-Reactivity

Human,Mouse

### Background

This gene encodes a transcription factor involved in the induction of genes regulated by oxygen, which is induced as oxygen levels fall. The encoded protein contains a basic-helix-loop-helix domain protein dimerization domain as well as a domain found in proteins in signal transduction pathways which respond to oxygen levels. Mutations in this gene are associated with erythrocytosis familial type 4.

### Recommended Dilutions

WB	1:500 - 1:2000
IHC-P	1:50 - 1:200
IF/ICC	1:50 - 1:200

### Immunogen Information

Gene ID	Swiss Prot
2034	Q99814

#### Immunogen

Recombinant fusion protein containing a sequence corresponding to amino acids 678-745 of human EPAS1/HIF2 $\alpha$  (NP\_001421.2).

#### Synonyms

HLF; MOP2; ECYT4; HIF2A; PASD2; bHLHe73; EPAS1/HIF2 $\alpha$

### Contact



[www.abclonal.com](http://www.abclonal.com)

### Product Information

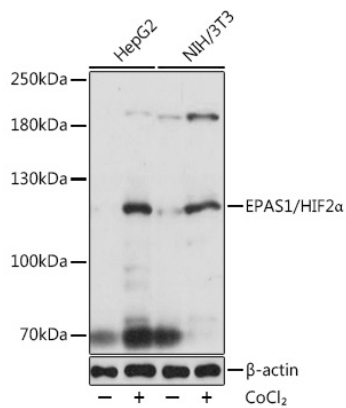
Source	Isotype	Purification
Rabbit	IgG	Affinity purification

#### Storage

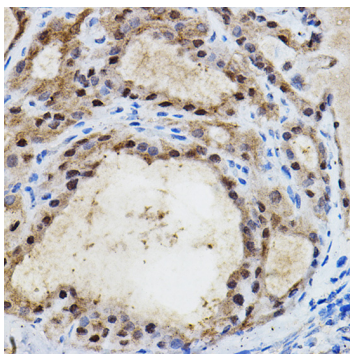
Store at -20°C. Avoid freeze / thaw cycles.

Buffer: PBS with 0.05% proclin300,50% glycerol,pH7.3.

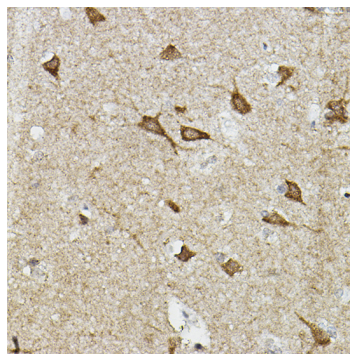
## Validation Data



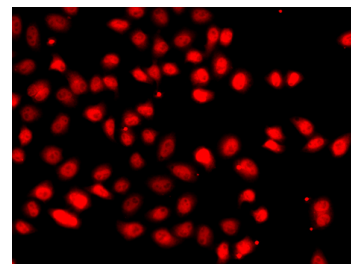
Western blot analysis of various lysates using EPAS1/HIF2 $\alpha$  Rabbit pAb (A7553) at 1:1000 dilution. Secondary antibody: HRP Goat Anti-Rabbit IgG (H+L) (AS014) at 1:10000 dilution. Lysates/proteins: 25 $\mu$ g per lane. Blocking buffer: 3% nonfat dry milk in TBST. Detection: ECL Basic Kit (RM00020). Exposure time: 1s.



Immunohistochemistry analysis of EPAS1/HIF2 $\alpha$  in paraffin-embedded human thyroid cancer using EPAS1/HIF2 $\alpha$  Rabbit pAb (A7553) at dilution of 1:100 (40x lens). Perform high pressure antigen retrieval with 10 mM citrate buffer pH 6.0 before commencing with IHC staining protocol.



Immunohistochemistry analysis of EPAS1/HIF2 $\alpha$  in paraffin-embedded human brain using EPAS1/HIF2 $\alpha$  Rabbit pAb (A7553) at dilution of 1:100 (40x lens). Perform high pressure antigen retrieval with 10 mM citrate buffer pH 6.0 before commencing with IHC staining protocol.



Immunofluorescence analysis of A549 cells using EPAS1/HIF2 $\alpha$  Rabbit pAb (A7553). Secondary antibody: Cy3 Goat Anti-Rabbit IgG (H+L) (AS007) at 1:500 dilution.