

[KO Validated] Beclin 1 Rabbit pAb

Catalog No.: A7353 **KO Validated** **27 Publications**

Basic Information

Catalog No.

A7353

Observed MW

60kDa

Calculated MW

51kDa

Category

Primary antibody

Applications

WB, IHC, IF, IP

Cross-Reactivity

Human, Mouse, Rat

Recommended Dilutions

WB	1:500 - 1:2000
IHC	1:50 - 1:200
IF	1:50 - 1:200
IP	1:50 - 1:100

Contact

 | www.abclonal.com

Background

This gene encodes a protein that regulates autophagy, a catabolic process of degradation induced by starvation. The encoded protein is a component of the phosphatidylinositol-3-kinase (PI3K) complex which mediates vesicle-trafficking processes. This protein is thought to play a role in multiple cellular processes, including tumorigenesis, neurodegeneration and apoptosis. Alternative splicing results in multiple transcript variants.

Immunogen Information

Gene ID	Swiss Prot
8678	Q14457

Immunogen

Recombinant fusion protein containing a sequence corresponding to amino acids 1-280 of human Beclin 1 (NP_003757.1).

Synonyms

ATG6;VPS30;beclin1;Beclin 1;BECN1;beclin-1

Product Information

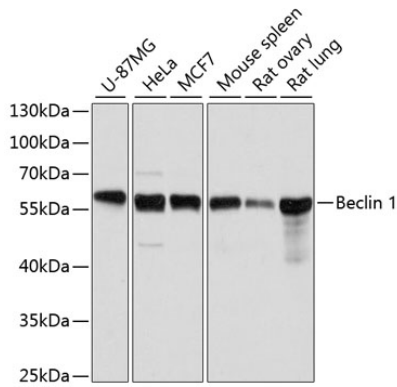
Source	Isotype	Purification
Rabbit	IgG	Affinity purification

Storage

Store at -20°C. Avoid freeze / thaw cycles.

Buffer: PBS with 0.02% sodium azide, 50% glycerol, pH7.3.

Validation Data



Western blot analysis of extracts of various cell lines, using Beclin 1 antibody (A7353) at 1:1000 dilution.

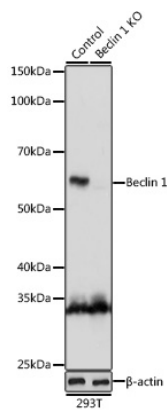
Secondary antibody: HRP Goat Anti-Rabbit IgG (H+L) (AS014) at 1:10000 dilution.

Lysates/proteins: 25ug per lane.

Blocking buffer: 3% nonfat dry milk in TBST.

Detection: ECL Basic Kit (RM00020).

Exposure time: 5s.



Western blot analysis of extracts from normal (control) and Beclin 1 knockout (KO) 293T cells, using Beclin 1 antibody (A7353) at 1:1000 dilution.

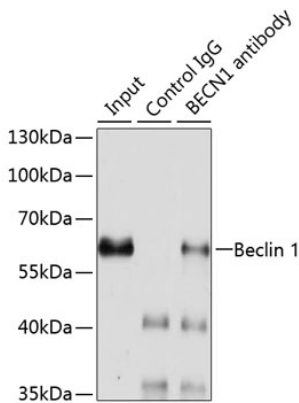
Secondary antibody: HRP Goat Anti-Rabbit IgG (H+L) (AS014) at 1:10000 dilution.

Lysates/proteins: 25ug per lane.

Blocking buffer: 3% nonfat dry milk in TBST.

Detection: ECL Basic Kit (RM00020).

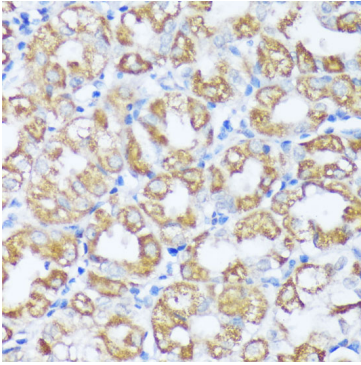
Exposure time: 3s.



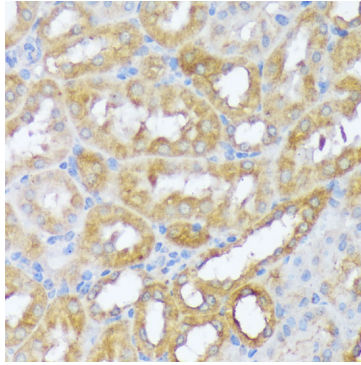
Immunoprecipitation analysis of 200ug extracts of HeLa cells using 3ug Beclin 1 antibody (A7353).

Western blot was performed from the immunoprecipitate using Beclin 1 antibody (A7353) at a dilution of 1:1000.

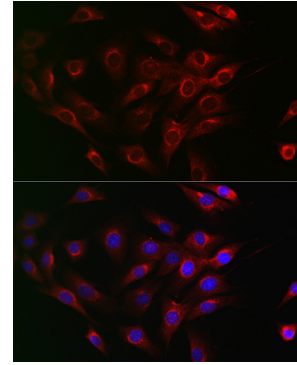
Validation Data



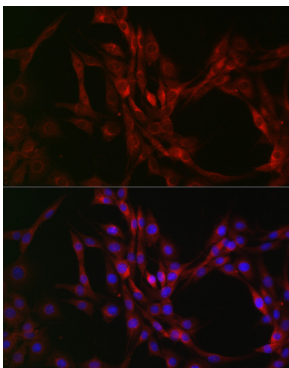
Immunohistochemistry of paraffin-embedded human stomach using Beclin 1 antibody (A7353) at dilution of 1:100 (40x lens).



Immunohistochemistry of paraffin-embedded mouse kidney using Beclin 1 antibody (A7353) at dilution of 1:100 (40x lens).



Immunofluorescence analysis of NIH/3T3 cells using [KO Validated] Beclin 1 Rabbit pAb (A7353) at dilution of 1:200 (40x lens). Blue: DAPI for nuclear staining.



Immunofluorescence analysis of PC-12 cells using [KO Validated] Beclin 1 Rabbit pAb (A7353) at dilution of 1:200 (40x lens). Blue: DAPI for nuclear staining.