

GOLPH2 Rabbit pAb

Catalog No.: A7283

Basic Information

Catalog No.

A7283

Observed MW

75KDa

Calculated MW

44kDa/45kDa

Category

Primary antibody

Applications

WB, IHC, IF

Cross-Reactivity

Human, Mouse, Rat

Recommended Dilutions

WB	1:500 - 1:2000
IHC	1:50 - 1:200
IF	1:20 - 1:50

Contact

 | www.abclonal.com

Background

The Golgi complex plays a key role in the sorting and modification of proteins exported from the endoplasmic reticulum. The protein encoded by this gene is a type II Golgi transmembrane protein. It processes proteins synthesized in the rough endoplasmic reticulum and assists in the transport of protein cargo through the Golgi apparatus. The expression of this gene has been observed to be upregulated in response to viral infection. Alternatively spliced transcript variants encoding the same protein have been described for this gene.

Immunogen Information

Gene ID	Swiss Prot
51280	Q8NBJ4

Immunogen

Recombinant fusion protein containing a sequence corresponding to amino acids 112-401 of human GOLPH2 (NP_057632.2).

Synonyms

GOLM1;C9orf155;GOLPH2;GP73;HEL46;PSEC0257;bA379P1.3

Product Information

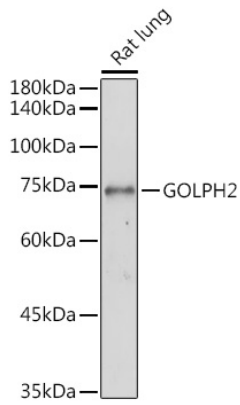
Source	Isotype	Purification
Rabbit	IgG	Affinity purification

Storage

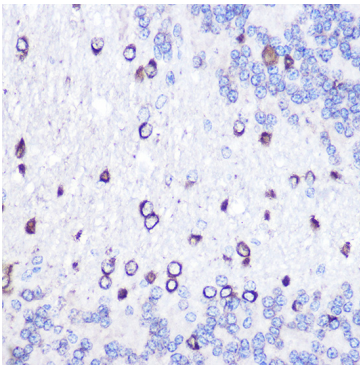
Store at -20°C. Avoid freeze / thaw cycles.

Buffer: PBS with 0.02% sodium azide,50% glycerol,pH7.3.

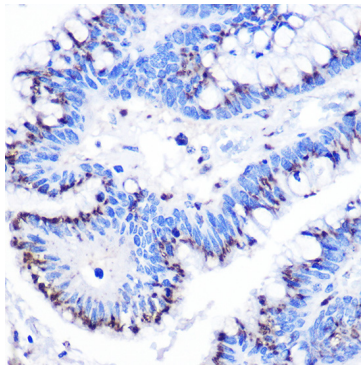
Validation Data



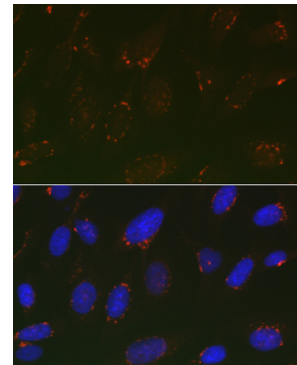
Western blot analysis of extracts of Rat lung, using GOLPH2 antibody (A7283) at 1:1000 dilution.
Secondary antibody: HRP Goat Anti-Rabbit IgG (H+L) (AS014) at 1:10000 dilution.
Lysates/proteins: 25ug per lane.
Blocking buffer: 3% nonfat dry milk in TBST.
Detection: ECL Enhanced Kit (RM00021).
Exposure time: 180s.



Immunohistochemistry of paraffin-embedded rat brain using GOLPH2 Rabbit pAb (A7283) at dilution of 1:100 (40x lens).



Immunohistochemistry of paraffin-embedded human colon carcinoma using GOLPH2 Rabbit pAb (A7283) at dilution of 1:100 (40x lens).



Immunofluorescence analysis of U2OS cells using GOLPH2 Rabbit pAb (A7283) at dilution of 1:100 (40x lens). Blue: DAPI for nuclear staining.