

MCP-1 Rabbit pAb

Catalog No.: A7277 **8 Publications**

Basic Information

Catalog No.

A7277

Observed MW

13KDa

Calculated MW

11kDa

Category

Primary antibody

Applications

WB, IHC

Cross-Reactivity

Human, Mouse, Rat

Recommended Dilutions

WB	1:500 - 1:2000
IHC	1:100 - 1:200

Contact

 | www.abclonal.com

Background

This gene is one of several cytokine genes clustered on the q-arm of chromosome 17. Chemokines are a superfamily of secreted proteins involved in immunoregulatory and inflammatory processes. The superfamily is divided into four subfamilies based on the arrangement of N-terminal cysteine residues of the mature peptide. This chemokine is a member of the CC subfamily which is characterized by two adjacent cysteine residues. This cytokine displays chemotactic activity for monocytes and basophils but not for neutrophils or eosinophils. It has been implicated in the pathogenesis of diseases characterized by monocytic infiltrates, like psoriasis, rheumatoid arthritis and atherosclerosis. It binds to chemokine receptors CCR2 and CCR4.

Immunogen Information

Gene ID	Swiss Prot
6347	P13500

Immunogen

Recombinant fusion protein containing a sequence corresponding to amino acids 24-99 of human MCP-1 (NP_002973.1).

Synonyms

CCL2;GDCF-2;HC11;HSMCR30;MCAF;MCP-1;MCP1;SCYA2;SMC-CF

Product Information

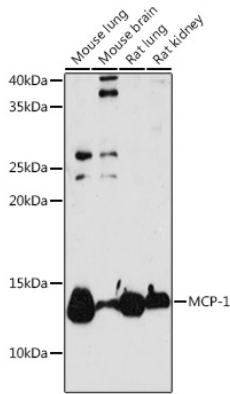
Source	Isotype	Purification
Rabbit	IgG	Affinity purification

Storage

Store at -20°C. Avoid freeze / thaw cycles.

Buffer: PBS with 0.02% sodium azide, 50% glycerol, pH7.3.

Validation Data



Western blot analysis of extracts of various cell lines, using MCP-1 antibody (A7277) at 1:1000 dilution.

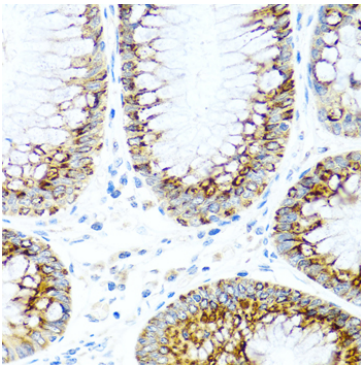
Secondary antibody: HRP Goat Anti-Rabbit IgG (H+L) (AS014) at 1:10000 dilution.

Lysates/proteins: 25ug per lane.

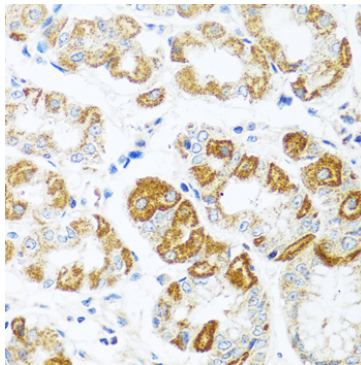
Blocking buffer: 3% nonfat dry milk in TBST.

Detection: ECL Basic Kit (RM00020).

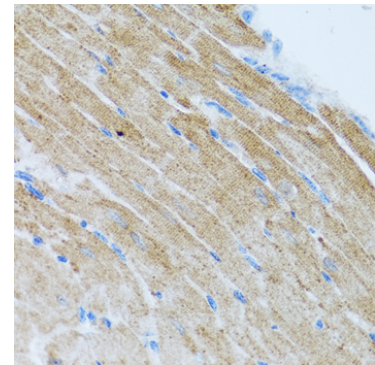
Exposure time: 180s.



Immunohistochemistry of paraffin-embedded human colon using MCP-1 antibody (A7277) at dilution of 1:100 (40x lens).



Immunohistochemistry of paraffin-embedded human stomach using MCP-1 antibody (A7277) at dilution of 1:100 (40x lens).



Immunohistochemistry of paraffin-embedded mouse heart using MCP-1 antibody (A7277) at dilution of 1:100 (40x lens).