

A7248

Leader in Biomolecular Solutions for Life Science



α -Smooth Muscle Actin (ACTA2) Rabbit pAb

Catalog No.: A7248

34 Publications

Basic Information

Observed MW

42kDa

Calculated MW

42kDa

Category

Polyclonal Antibody

Applications

WB,IHC-P,IF/ICC,ELISA

Cross-Reactivity

Human,Mouse,Rat

Background

This gene encodes one of six different actin proteins. Actins are highly conserved proteins that are involved in cell motility, structure, integrity, and intercellular signaling. The encoded protein is a smooth muscle actin that is involved in vascular contractility and blood pressure homeostasis. Mutations in this gene cause a variety of vascular diseases, such as thoracic aortic disease, coronary artery disease, stroke, and Moyamoya disease, as well as multisystemic smooth muscle dysfunction syndrome.

Recommended Dilutions

WB 1:500 - 1:1000

IHC-P 1:20 - 1:200

IF/ICC 1:50 - 1:200

Immunogen Information

Gene ID

59

Swiss Prot

P62736

Immunogen

A synthetic peptide corresponding to a sequence within amino acids 1-100 of human α -Smooth Muscle Actin (ACTA2) (NP_001604.1).

Synonyms

ACTSA; α -Smooth Muscle Actin (ACTA2)

Contact



www.abclonal.com

Product Information

Source

Rabbit

Isotype

IgG

Purification

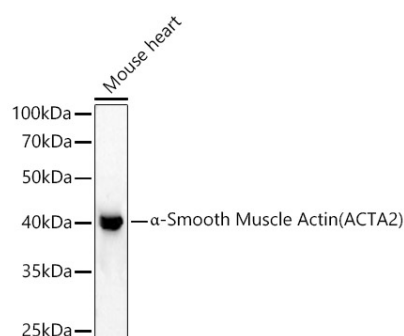
Affinity purification

Storage

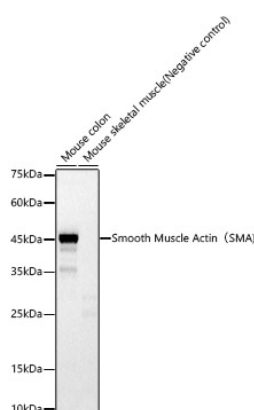
Store at -20°C. Avoid freeze / thaw cycles.

Buffer: PBS with 0.05% proclin300,50% glycerol,pH7.3.

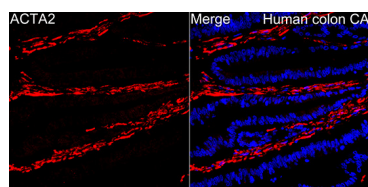
Validation Data



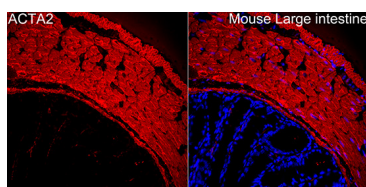
Western blot analysis of lysates from Mouse heart, using α -Smooth Muscle Actin (ACTA2) Rabbit pAb (A7248) at 1:1000 dilution.
 Secondary antibody: HRP Goat Anti-Rabbit IgG (H+L) (AS014) at 1:10000 dilution.
 Lysates/proteins: 25 μ g per lane.
 Blocking buffer: 3% nonfat dry milk in TBST.
 Detection: ECL Basic Kit (RM00020).
 Exposure time: 10s.



Western blot analysis of various lysates, using Smooth Muscle Actin (SMA) Rabbit pAb (A7248) at 1:500 dilution.
 Secondary antibody: HRP Goat Anti-Rabbit IgG (H+L) (AS014) at 1:10000 dilution.
 Lysates/proteins: 25 μ g per lane.
 Blocking buffer: 3% nonfat dry milk in TBST.
 Detection: ECL Basic Kit (RM00020).
 Exposure time: 30s.



Immunofluorescence analysis of paraffin-embedded Human colon CA using α -Smooth Muscle Actin (ACTA2) Rabbit pAb (A7248) at dilution of 1:200 (40x lens).
 Secondary antibody: Cy3 Goat Anti-Rabbit IgG (H+L) (AS007) at 1:500 dilution. Blue: DAPI for nuclear staining.



Immunofluorescence analysis of paraffin-embedded mouse large intestine using α -Smooth Muscle Actin (ACTA2) Rabbit pAb (A7248) at dilution of 1:100 (40x lens).
 Secondary antibody: Cy3 Goat Anti-Rabbit IgG (H+L) (AS007) at 1:500 dilution. Blue: DAPI for nuclear staining.