

ITLN1 Rabbit pAb

Catalog No.: A7234

Basic Information

Catalog No.

A7234

Observed MW

37kDa

Calculated MW

34kDa

Category

Primary antibody

Applications

WB, IHC, IF

Cross-Reactivity

Human, Mouse, Rat

Recommended Dilutions

WB	1:500 - 1:2000
IHC	1:50 - 1:200
IF	1:50 - 1:200

Contact

 | www.abclonal.com

Background

Immunogen Information

Gene ID

55600

Swiss Prot

Q8WWA0

Immunogen

Recombinant fusion protein containing a sequence corresponding to amino acids 19-313 of human ITLN1 (NP_060095.2).

Synonyms

ITLN1;HL-1;HL1;INTL;ITLN;LFR;hintL;omentin

Product Information

Source

Rabbit

Isotype

IgG

Purification

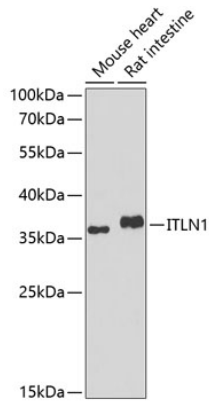
Affinity purification

Storage

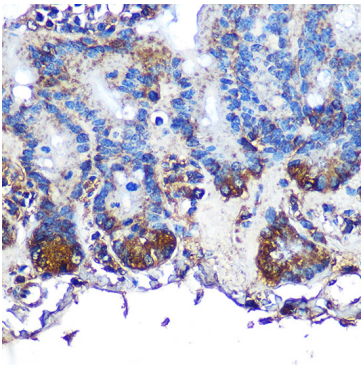
Store at -20°C. Avoid freeze / thaw cycles.

Buffer: PBS with 0.02% sodium azide,50% glycerol,pH7.3.

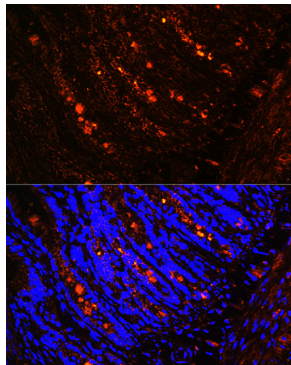
Validation Data



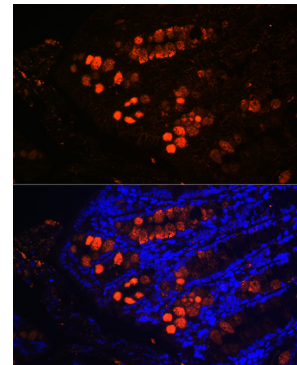
Western blot analysis of extracts of various cell lines, using ITLN1 antibody (A7234) at 1:1000 dilution. Secondary antibody: HRP Goat Anti-Rabbit IgG (H+L) (AS014) at 1:10000 dilution. Lysates/proteins: 25ug per lane. Blocking buffer: 3% nonfat dry milk in TBST. Detection: ECL Basic Kit (RM00020). Exposure time: 90s.



Immunohistochemistry of paraffin-embedded mouse intestine using ITLN1 Rabbit pAb (A7234) at dilution of 1:100 (40x lens).



Immunofluorescence analysis of rat intestine using ITLN1 Rabbit pAb (A7234) at dilution of 1:100 (40x lens). Blue: DAPI for nuclear staining.



Immunofluorescence analysis of mouse colon using ITLN1 Rabbit pAb (A7234) at dilution of 1:100 (40x lens). Blue: DAPI for nuclear staining.