

TEK Rabbit pAb

Catalog No.: A7222 **2 Publications**

Basic Information

Catalog No.

A7222

Observed MW

126kDa

Calculated MW

109kDa/121kDa/125kDa

Category

Primary antibody

Applications

WB, IHC, IF

Cross-Reactivity

Human, Mouse, Rat

Recommended Dilutions

WB	1:500 - 1:2000
IHC	1:50 - 1:100
IF	1:50 - 1:100

Contact

 | www.abclonal.com

Background

This gene encodes a receptor that belongs to the protein tyrosine kinase Tie2 family. The encoded protein possesses a unique extracellular region that contains two immunoglobulin-like domains, three epidermal growth factor (EGF)-like domains and three fibronectin type III repeats. The ligand angiopoietin-1 binds to this receptor and mediates a signaling pathway that functions in embryonic vascular development. Mutations in this gene are associated with inherited venous malformations of the skin and mucous membranes. Alternative splicing results in multiple transcript variants. Additional alternatively spliced transcript variants of this gene have been described, but their full-length nature is not known.

Immunogen Information

Gene ID	Swiss Prot
7010	Q02763

Immunogen

Recombinant fusion protein containing a sequence corresponding to amino acids 500-750 of human TEK (NP_000450.2).

Synonyms

TEK; CD202B; GLC3E; TIE-2; TIE2; VMCM; VMCM1; Tie2

Product Information

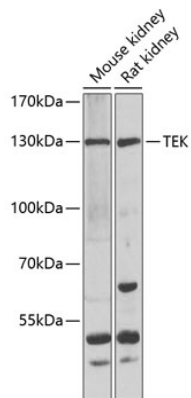
Source	Isotype	Purification
Rabbit	IgG	Affinity purification

Storage

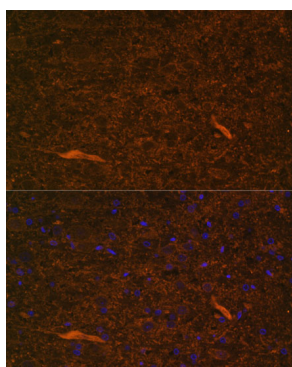
Store at -20°C. Avoid freeze / thaw cycles.

Buffer: PBS with 0.02% sodium azide, 50% glycerol, pH7.3.

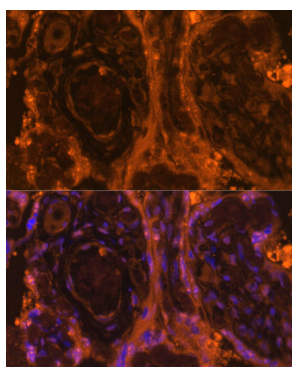
Validation Data



Western blot analysis of extracts of various cell lines, using TEK antibody (A7222) at 1:1000 dilution. Secondary antibody: HRP Goat Anti-Rabbit IgG (H+L) (AS014) at 1:10000 dilution. Lysates/proteins: 25ug per lane. Blocking buffer: 3% nonfat dry milk in TBST. Detection: ECL Basic Kit (RM00020). Exposure time: 90s.



Immunofluorescence analysis of rat brain using TEK antibody (A7222) at dilution of 1:100. Blue: DAPI for nuclear staining.



Immunofluorescence analysis of human placenta using TEK antibody (A7222) at dilution of 1:100. Blue: DAPI for nuclear staining.