

A7215

Leader in Biomolecular Solutions for Life Science



# $\alpha$ -Synuclein Rabbit pAb

Catalog No.: A7215 **5 Publications**

## Basic Information

### Observed MW

18kDa/

### Calculated MW

14kDa

### Category

Polyclonal Antibody

### Applications

WB,IF/ICC,ELISA

### Cross-Reactivity

Human,Mouse,Rat

## Background

Alpha-synuclein is a member of the synuclein family, which also includes beta- and gamma-synuclein. Synucleins are abundantly expressed in the brain and alpha- and beta-synuclein inhibit phospholipase D2 selectively. SNCA may serve to integrate presynaptic signaling and membrane trafficking. Defects in SNCA have been implicated in the pathogenesis of Parkinson disease. SNCA peptides are a major component of amyloid plaques in the brains of patients with Alzheimer's disease. Alternatively spliced transcripts encoding different isoforms have been identified for this gene.

## Recommended Dilutions

WB	1:500 - 1:1000
IF/ICC	1:50 - 1:200

## Immunogen Information

Gene ID	Swiss Prot
6622	P37840

### Immunogen

Recombinant fusion protein containing a sequence corresponding to amino acids 59-140 of human alpha-Synuclein (NP\_000336.1).

### Synonyms

PD1; NACP; PARK1; PARK4;  $\alpha$ -Synuclein

## Contact



[www.abclonal.com](http://www.abclonal.com)

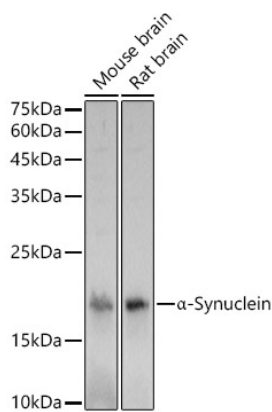
## Product Information

Source	Isotype	Purification
Rabbit	IgG	Affinity purification

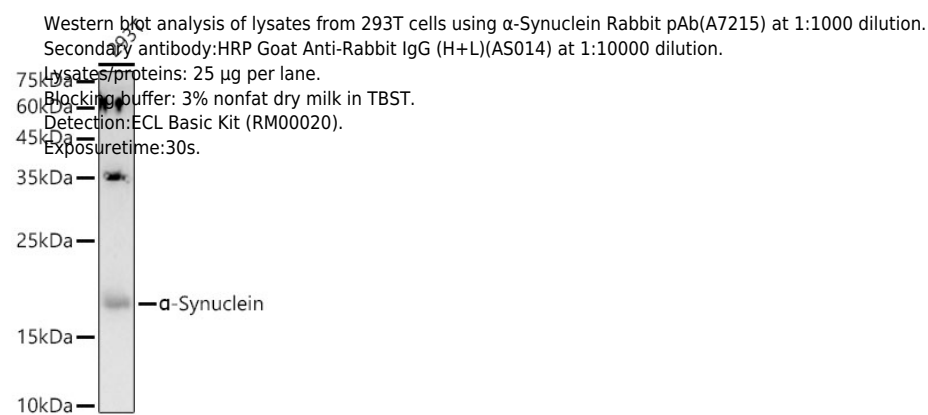
### Storage

Store at -20°C. Avoid freeze / thaw cycles.  
Buffer: PBS with 0.05% proclin300,50% glycerol,pH7.3.

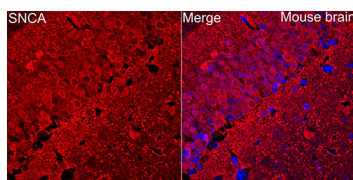
## Validation Data



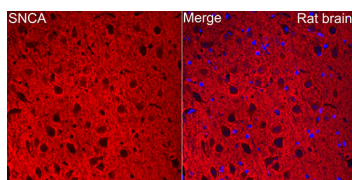
Western blot analysis of various lysates using  $\alpha$ -Synuclein Rabbit pAb (A7215) at 1:1000 dilution.  
 Secondary antibody:HRP Goat Anti-Rabbit IgG (H+L)(AS014) at 1:10000 dilution.  
 Lysates / proteins: 25  $\mu$ g per lane.  
 Blocking buffer: 3 % nonfat dry milk in TBST.  
 Detection:ECL Basic Kit (RM00020).  
 Exposure time: 1s.



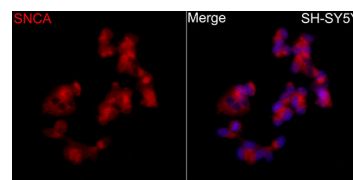
Western blot analysis of lysates from 293T cells using  $\alpha$ -Synuclein Rabbit pAb(A7215) at 1:1000 dilution.  
 Secondary antibody:HRP Goat Anti-Rabbit IgG (H+L)(AS014) at 1:10000 dilution.  
 Lysates / proteins: 25  $\mu$ g per lane.  
 Blocking buffer: 3% nonfat dry milk in TBST.  
 Detection:ECL Basic Kit (RM00020).  
 Exposure time:30s.



Immunofluorescence analysis of mouse brain cells using  $\alpha$ -Synuclein Rabbit pAb (A7215) at dilution of 1:100 (40x lens).  
 Secondary antibody: Cy3 Goat Anti-Rabbit IgG (H+L) (AS007) at 1:500 dilution. Blue: DAPI for nuclear staining.



Immunofluorescence analysis of rat brain cells using  $\alpha$ -Synuclein Rabbit pAb (A7215) at dilution of 1:100 (40x lens).  
 Secondary antibody: Cy3 Goat Anti-Rabbit IgG (H+L) (AS007) at 1:500 dilution. Blue: DAPI for nuclear staining.



Immunofluorescence analysis of SH-SY5Y cells using  $\alpha$ -Synuclein Rabbit pAb (A7215) at dilution of 1:100 (40x lens).  
 Secondary antibody: Cy3 Goat Anti-Rabbit IgG (H+L) (AS007) at 1:500 dilution. Blue: DAPI for nuclear staining.