

A7190

Leader in Biomolecular Solutions for Life Science



IDH2 Rabbit pAb

Catalog No.: A7190

2 Publications

Basic Information

Observed MW

43kDa

Calculated MW

51kDa

Category

Polyclonal Antibody

Applications

WB,IHC-P,IF/ICC,IP,ChIP,ELISA

Cross-Reactivity

Human,Mouse,Rat

Background

Isocitrate dehydrogenases catalyze the oxidative decarboxylation of isocitrate to 2-oxoglutarate. These enzymes belong to two distinct subclasses, one of which utilizes NAD(+) as the electron acceptor and the other NADP(+). Five isocitrate dehydrogenases have been reported: three NAD(+)-dependent isocitrate dehydrogenases, which localize to the mitochondrial matrix, and two NADP(+)-dependent isocitrate dehydrogenases, one of which is mitochondrial and the other predominantly cytosolic. Each NADP(+)-dependent isozyme is a homodimer. The protein encoded by this gene is the NADP(+)-dependent isocitrate dehydrogenase found in the mitochondria. It plays a role in intermediary metabolism and energy production. This protein may tightly associate or interact with the pyruvate dehydrogenase complex. Alternative splicing results in multiple transcript variants.

Recommended Dilutions

WB 1:500 - 1:1000

IHC-P 1:50 - 1:200

IF/ICC 1:20 - 1:50

IP 0.5µg-4µg antibody for
200µg-400µg extracts
of whole cells

ChIP 5µg antibody for
10µg-15µg of
Chromatin

Immunogen Information

Gene ID

3418

Swiss Prot

P48735

Immunogen

Recombinant fusion protein containing a sequence corresponding to amino acids 193-452 of human IDH2 (NP_002159.2).

Synonyms

IDH; IDP; IDHM; IDPM; ICD-M; IDH-2; D2HGA2; mNADP-IDH; IDH2

Product Information

Source

Rabbit

Isotype

IgG

Purification

Affinity purification

Storage

Store at -20°C. Avoid freeze / thaw cycles.

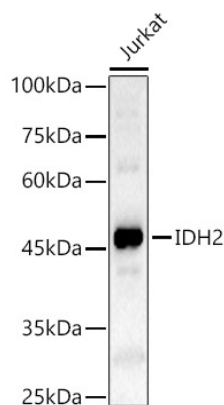
Buffer: PBS with 0.05% proclin300,50% glycerol,pH7.3.

Contact



www.abclonal.com

Validation Data



Western blot analysis of lysates from Jurkat cells, using IDH2 Rabbit pAb (A7190) at 1:600 dilution.

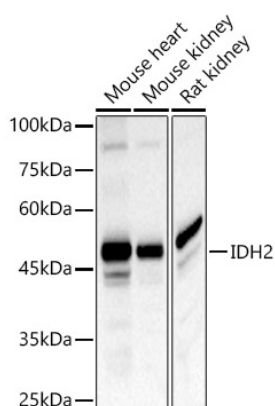
Secondary antibody: HRP Goat Anti-Rabbit IgG (H+L) (AS014) at 1:10000 dilution.

Lysates/proteins: 25µg per lane.

Blocking buffer: 3% nonfat dry milk in TBST.

Detection: ECL Basic Kit (RM00020).

Exposure time: 60s.



Western blot analysis of various lysates, using IDH2 Rabbit pAb (A7190) at 1:600 dilution.

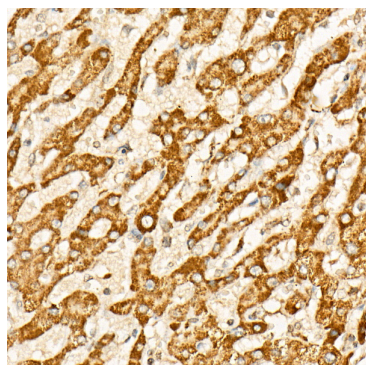
Secondary antibody: HRP Goat Anti-Rabbit IgG (H+L) (AS014) at 1:10000 dilution.

Lysates/proteins: 25µg per lane.

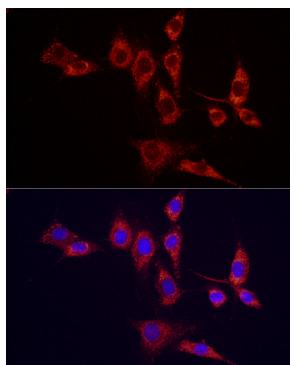
Blocking buffer: 3% nonfat dry milk in TBST.

Detection: ECL Basic Kit (RM00020).

Exposure time: 60s.

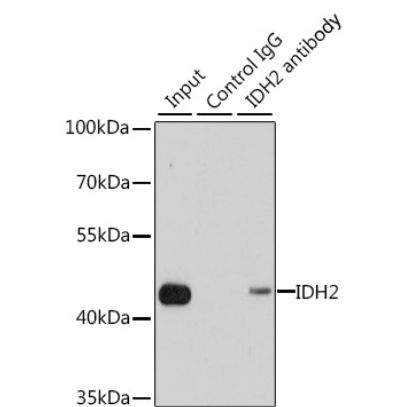


Immunohistochemistry analysis of paraffin-embedded Human liver cancer using IDH2 Rabbit pAb (A7190) at dilution of 1:50 (40x lens). Perform high pressure antigen retrieval with 10 mM citrate buffer pH 6.0 before commencing with IHC staining protocol.

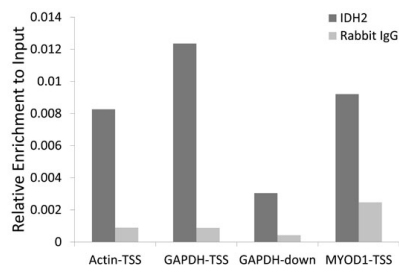


Immunofluorescence analysis of NIH/3T3 cells using IDH2 Rabbit pAb (A7190) at dilution of 1:50 (40x lens). Secondary antibody: Cy3 Goat Anti-Rabbit IgG (H+L) (AS007) at 1:500 dilution. Blue: DAPI for nuclear staining.

Validation Data



Immunoprecipitation analysis of 200 µg extracts of MCF7 cells using 1 µg IDH2 antibody (A7190). Western blot was performed from the immunoprecipitate using IDH2 antibody (A7190) at a dilution of 1:1000.



Chromatin immunoprecipitation of extracts of 293T cell line, using IDH2 antibody (A7190) and rabbit IgG. The amount of immunoprecipitated DNA was checked by quantitative PCR. Histogram was constructed by the ratios of the immunoprecipitated DNA to the input.