

A7109

Leader in Biomolecular Solutions for Life Science



[KO Validated] ANAPC5 Rabbit pAb

Catalog No.: A7109

KO Validated

1 Publications

Basic Information

Observed MW

85kDa

Calculated MW

85kDa

Category

Polyclonal Antibody

Applications

WB,IHC-P,IP,ELISA

Cross-Reactivity

Human,Mouse,Rat

Background

This gene encodes a tetratricopeptide repeat-containing component of the anaphase promoting complex/cyclosome (APC/C), a large E3 ubiquitin ligase that controls cell cycle progression by targeting a number of cell cycle regulators such as B-type cyclins for 26S proteasome-mediated degradation through ubiquitination. The encoded protein is required for the proper ubiquitination function of APC/C and for the interaction of APC/C with transcription coactivators. It also interacts with polyA binding protein and represses internal ribosome entry site-mediated translation. Multiple transcript variants encoding different isoforms have been found for this gene. These differences cause translation initiation at a downstream AUG and result in a shorter protein (isoform b), compared to isoform a.

Recommended Dilutions

WB 1:500 - 1:1000

IHC-P 1:50 - 1:200

IP 0.5µg-4µg antibody for
200µg-400µg extracts
of whole cells

Immunogen Information

Gene ID

51433

Swiss Prot

Q9UJX4

Immunogen

Recombinant fusion protein containing a sequence corresponding to amino acids 1-250 of human ANAPC5 (NP_057321.2).

Synonyms

APC5; C5

Contact



www.abclonal.com

Product Information

Source

Rabbit

Isotype

IgG

Purification

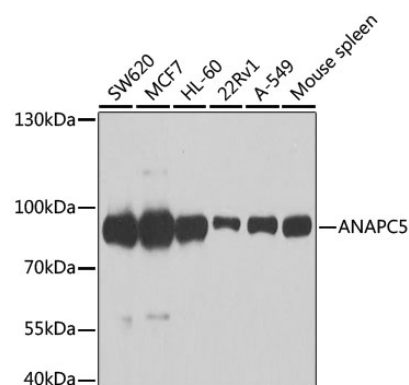
Affinity purification

Storage

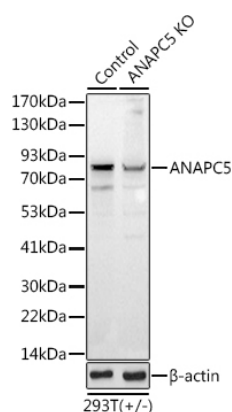
Store at -20°C. Avoid freeze / thaw cycles.

Buffer: PBS with 0.02% sodium azide, 50% glycerol, pH7.3.

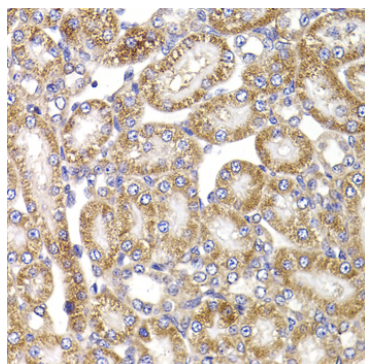
Validation Data



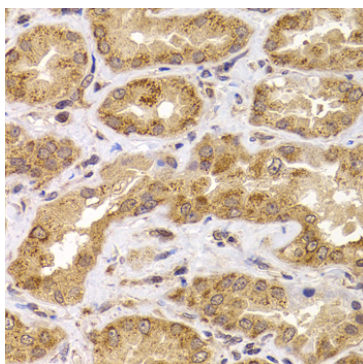
Western blot analysis of various lysates using [KO Validated] ANAPC5 Rabbit pAb (A7109) at 1:1000 dilution.
 Secondary antibody: HRP Goat Anti-Rabbit IgG (H+L) (AS014) at 1:10000 dilution.
 Lysates/proteins: 25µg per lane.
 Blocking buffer: 3% nonfat dry milk in TBST.
 Detection: ECL Basic Kit (RM00020).
 Exposure time: 90s.



Western blot analysis of lysates from wild type (WT) and ANAPC5 knockout (KO) 293T cells, using [KO Validated] ANAPC5 Rabbit pAb (A7109) at 1:1000 dilution.
 Secondary antibody: HRP Goat Anti-Rabbit IgG (H+L) (AS014) at 1:10000 dilution.
 Lysates/proteins: 25µg per lane.
 Blocking buffer: 3% nonfat dry milk in TBST.
 Detection: ECL Basic Kit (RM00020).
 Exposure time: 30s.

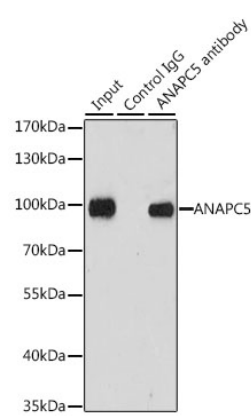


Immunohistochemistry analysis of paraffin-embedded Rat kidney using [KO Validated] ANAPC5 Rabbit pAb (A7109) at dilution of 1:100 (40x lens). Perform microwave antigen retrieval with 10 mM PBS buffer pH 7.2 before commencing with IHC staining protocol.



Immunohistochemistry analysis of paraffin-embedded Human kidney using [KO Validated] ANAPC5 Rabbit pAb (A7109) at dilution of 1:100 (40x lens). Perform microwave antigen retrieval with 10 mM PBS buffer pH 7.2 before commencing with IHC staining protocol.

Validation Data



Immunoprecipitation analysis of 200 µg extracts of MCF-7 cells, using 3 µg ANAPC5 antibody (A7109). Western blot was performed from the immunoprecipitate using ANAPC5 antibody (A7109) at a dilution of 1:1000.