

A6933

Leader in Biomolecular Solutions for Life Science



AFF1 Rabbit pAb

Catalog No.: A6933

Basic Information

Observed MW

135kDa

Calculated MW

131kDa

Category

Polyclonal Antibody

Applications

WB,IF/ICC,ELISA

Cross-Reactivity

Human,Rat

Background

This gene encodes a member of the AF4/ lymphoid nuclear protein related to the Fragile X E syndrome (FRAXE) family of proteins, which have been implicated in human childhood lymphoblastic leukemia, fragile chromosome X intellectual disability, and ataxia. It is the prevalent mixed-lineage leukemia fusion gene associated with spontaneous acute lymphoblastic leukemia. Members of this family have three conserved domains: an N-terminal homology domain, an AF4/ lymphoid nuclear protein domain, and a C-terminal homology domain. The protein functions as a regulator of RNA polymerase II-mediated transcription through elongation and chromatin remodeling functions. Through RNA interference screens, this gene has been shown to promote the expression of CD133, a plasma membrane glycoprotein required for leukemia cell survival. Alternative splicing results in multiple transcript variants.

Recommended Dilutions

WB 1:500 - 1:2000

IF/ICC 1:50 - 1:100

Immunogen Information

Gene ID

4299

Swiss Prot

P51825

Immunogen

Recombinant fusion protein containing a sequence corresponding to amino acids 1124-1218 of human AFF1 (NP_001160165.1).

Synonyms

AF4; FEL; PBM1; MLLT2; AFF1

Contact



www.abclonal.com

Product Information

Source

Rabbit

Isotype

IgG

Purification

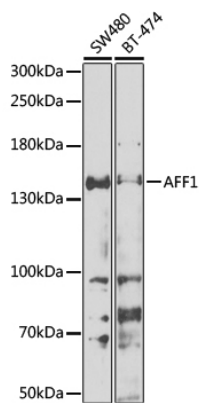
Affinity purification

Storage

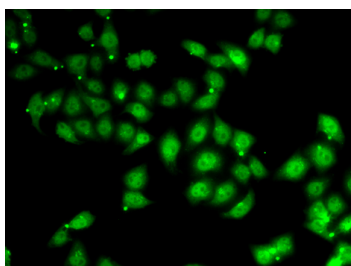
Store at -20°C. Avoid freeze / thaw cycles.

Buffer: PBS with 0.02% sodium azide,50% glycerol,pH7.3.

Validation Data



Western blot analysis of various lysates using AFF1 Rabbit pAb (A6933) at 1:1000 dilution.
Secondary antibody: HRP Goat Anti-Rabbit IgG (H+L) (AS014) at 1:10000 dilution.
Lysates/proteins: 25µg per lane.
Blocking buffer: 3% nonfat dry milk in TBST.
Detection: ECL Enhanced Kit (RM00021).
Exposure time: 30s.



Immunofluorescence analysis of U2OS cells using AFF1 Rabbit pAb (A6933). Secondary antibody: Cy3 Goat Anti-Rabbit IgG (H+L) (AS007) at 1:500 dilution.