

A6864

Leader in Biomolecular Solutions for Life Science



# ALOX15 Rabbit pAb

Catalog No.: A6864 **7 Publications**

## Basic Information

### Observed MW

75kDa

### Calculated MW

75kDa

### Category

Mouse Monoclonal Antibody

### Applications

WB,IHC-P,IF/ICC,ELISA

### Cross-Reactivity

Human,Mouse,Rat

## Background

This gene encodes a member of the lipoxygenase family of proteins. The encoded enzyme acts on various polyunsaturated fatty acid substrates to generate various bioactive lipid mediators such as eicosanoids, hepoxilins, lipoxins, and other molecules. The encoded enzyme and its reaction products have been shown to regulate inflammation and immunity. Multiple pseudogenes of this gene have been identified in the human genome.

## Recommended Dilutions

WB	1:500 - 1:1000
IHC-P	1:50 - 1:200
IF/ICC	1:50 - 1:200

## Immunogen Information

<b>Gene ID</b>	<b>Swiss Prot</b>
246	P16050

### Immunogen

Recombinant fusion protein containing a sequence corresponding to amino acids 1-230 of human ALOX15 (NP\_001131.3).

### Synonyms

LOG15; 12-LOX; 15-LOX; 15-LOX-1; ALOX15

## Contact



[www.abclonal.com](http://www.abclonal.com)

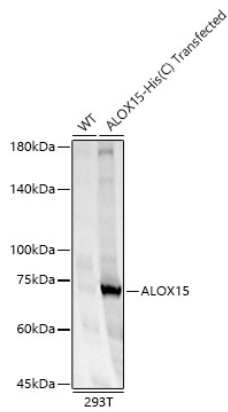
## Product Information

<b>Source</b>	<b>Isotype</b>	<b>Purification</b>
Rabbit	IgG	Affinity purification

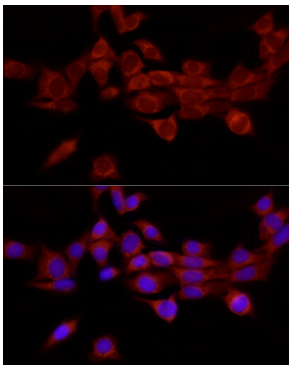
### Storage

Store at -20°C. Avoid freeze / thaw cycles.  
Buffer: PBS with 0.05% proclin300,50% glycerol,pH7.3.

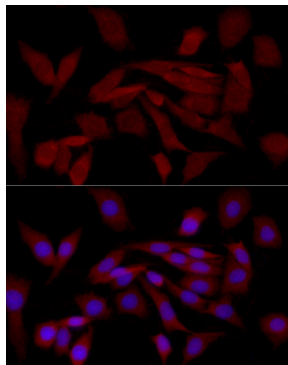
## Validation Data



Western blot analysis of lysates from wild type (WT) and 293T cells transfected with ALOX15 using ALOX15 Rabbit pAb (A6864) at 1:1000 dilution.  
Secondary antibody:HRP Goat Anti-Rabbit IgG (H+L)(AS014) at 1:10000 dilution.  
Lysates / proteins: 25 µg per lane.  
Blocking buffer: 3 % nonfat dry milk in TBST.  
Detection:ECL Basic Kit (RM00020).  
Exposure time: 10s.



Immunofluorescence analysis of NIH/3T3 cells using ALOX15 Rabbit pAb (A6864) at dilution of 1:50 (40x lens). Secondary antibody: Cy3 Goat Anti-Rabbit IgG (H+L) (AS007) at 1:500 dilution. Blue: DAPI for nuclear staining.



Immunofluorescence analysis of PC-12 cells using ALOX15 Rabbit pAb (A6864) at dilution of 1:50 (40x lens). Secondary antibody: Cy3 Goat Anti-Rabbit IgG (H+L) (AS007) at 1:500 dilution. Blue: DAPI for nuclear staining.