

A6862

Leader in Biomolecular Solutions for Life Science



ABCA3 Rabbit pAb

Catalog No.: A6862

1 Publications

Basic Information

Observed MW

191kDa

Calculated MW

191kDa

Category

Polyclonal Antibody

Applications

WB, ELISA

Cross-Reactivity

Human, Rat

Background

The membrane-associated protein encoded by this gene is a member of the superfamily of ATP-binding cassette (ABC) transporters. ABC proteins transport various molecules across extra- and intracellular membranes. ABC genes are divided into seven distinct subfamilies (ABC1, MDR/TAP, MRP, ALD, OABP, GCN20, White). This protein is a member of the ABC1 subfamily. Members of the ABC1 subfamily comprise the only major ABC subfamily found exclusively in multicellular eukaryotes. The full transporter encoded by this gene may be involved in development of resistance to xenobiotics and engulfment during programmed cell death.

Recommended Dilutions

WB 1:500 - 1:2000

Immunogen Information

Gene ID

21

Swiss Prot

Q99758

Immunogen

Recombinant fusion protein containing a sequence corresponding to amino acids 43-203 of human ABCA3 (NP_001080.2).

Synonyms

ABC3; ABC-C; SMDP3; LBM180; EST111653; ABCA3

Contact



www.abclonal.com

Product Information

Source

Rabbit

Isotype

IgG

Purification

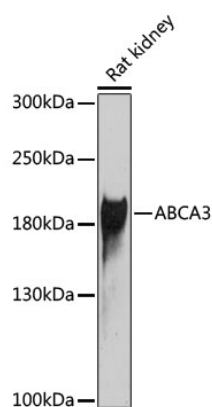
Affinity purification

Storage

Store at -20°C. Avoid freeze / thaw cycles.

Buffer: PBS with 0.02% sodium azide, 50% glycerol, pH 7.3.

Validation Data



Western blot analysis of extracts of rat kidney, using ABCA3 antibody (A6862) at 1:1000 dilution.
Secondary antibody: HRP Goat Anti-Rabbit IgG (H+L) (A5014) at 1:10000 dilution.
Lysates/proteins: 25µg per lane.
Blocking buffer: 3% nonfat dry milk in TBST.
Detection: ECL Basic Kit (RM00020).
Exposure time: 90s.