

A6830

Leader in Biomolecular Solutions for Life Science



## $\alpha$ -Tubulin Rabbit mAb

Catalog No.: A6830

Recombinant

7 Publications

### Basic Information

#### Observed MW

50kDa

#### Calculated MW

50kDa

#### Category

SMab Recombinant Monoclonal  
Antibody

#### Applications

WB,IHC-P,IF/ICC,IP,ELISA

#### Cross-Reactivity

Human,Mouse,Rat

#### CloneNo number

ARC2486

### Background

Microtubules of the eukaryotic cytoskeleton perform essential and diverse functions and are composed of a heterodimer of alpha and beta tubulin. The genes encoding these microtubule constituents are part of the tubulin superfamily, which is composed of six distinct families. Genes from the alpha, beta and gamma tubulin families are found in all eukaryotes. The alpha and beta tubulins represent the major components of microtubules, while gamma tubulin plays a critical role in the nucleation of microtubule assembly. There are multiple alpha and beta tubulin genes and they are highly conserved among and between species. This gene encodes an alpha tubulin that is a highly conserved homolog of a rat testis-specific alpha tubulin. Alternatively spliced transcript variants encoding different isoforms have been found for this gene.

### Recommended Dilutions

WB	1:500 - 1:2000
IHC-P	1:50 - 1:200
IF/ICC	1:50 - 1:200
IP	0.5 $\mu$ g-4 $\mu$ g antibody for 200 $\mu$ g-400 $\mu$ g extracts of whole cells

### Immunogen Information

#### Gene ID

7277

#### Swiss Prot

P68366

#### Immunogen

A synthetic peptide corresponding to a sequence within amino acids 349-448 of human  $\alpha$ -Tubulin (P68366).

#### Synonyms

ALS22; TUBA1; H2-ALPHA;  $\alpha$ -Tubulin

### Contact

 [www.abclonal.com](http://www.abclonal.com)

### Product Information

#### Source

Rabbit

#### Isotype

IgG

#### Purification

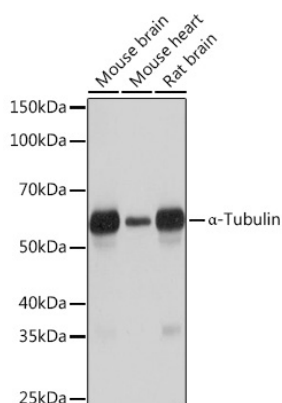
Affinity purification

#### Storage

Store at -20°C. Avoid freeze / thaw cycles.

Buffer: PBS with 0.02% sodium azide,0.05% BSA,50% glycerol,pH7.3.

## Validation Data



Western blot analysis of various lysates using  $\alpha$ -Tubulin Rabbit mAb (A6830) at 1:1000 dilution.

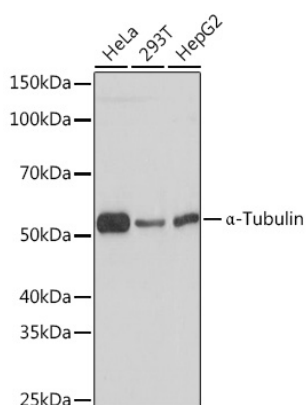
Secondary antibody: HRP Goat Anti-Rabbit IgG (H+L) (AS014) at 1:10000 dilution.

Lysates/proteins: 25 $\mu$ g per lane.

Blocking buffer: 3% nonfat dry milk in TBST.

Detection: ECL Basic Kit (RM00020).

Exposure time: 3s.



Western blot analysis of various lysates using  $\alpha$ -Tubulin Rabbit mAb (A6830) at 1:1000 dilution.

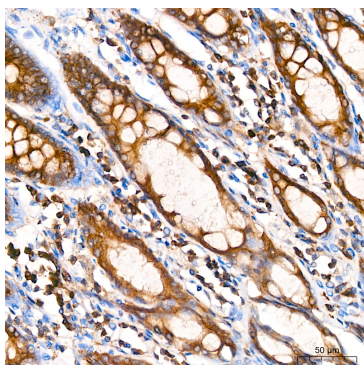
Secondary antibody: HRP Goat Anti-Rabbit IgG (H+L) (AS014) at 1:10000 dilution.

Lysates/proteins: 25 $\mu$ g per lane.

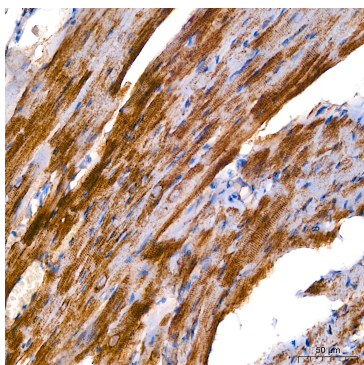
Blocking buffer: 3% nonfat dry milk in TBST.

Detection: ECL Basic Kit (RM00020).

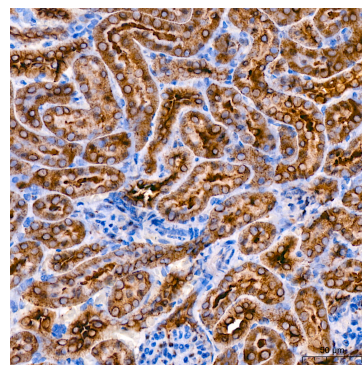
Exposure time: 3s.



Immunohistochemistry analysis of paraffin-embedded Human colon using  $\alpha$ -Tubulin Rabbit mAb (A6830) at dilution of 1:200 (40x lens). High pressure antigen retrieval performed with 0.01M Citrate Bufferr (pH 6.0) prior to IHC staining.

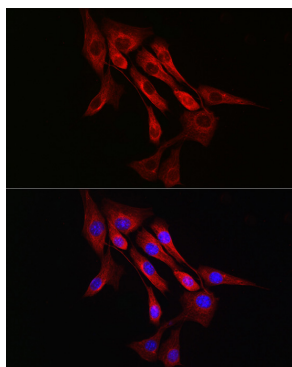


Immunohistochemistry analysis of paraffin-embedded Mouse heart using  $\alpha$ -Tubulin Rabbit mAb (A6830) at dilution of 1:200 (40x lens). High pressure antigen retrieval performed with 0.01M Citrate Bufferr (pH 6.0) prior to IHC staining.

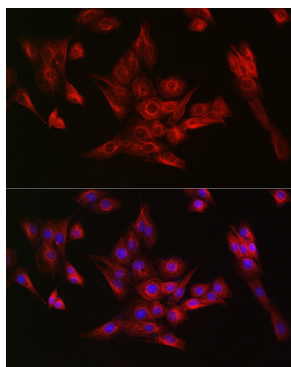


Immunohistochemistry analysis of paraffin-embedded Mouse kidney using  $\alpha$ -Tubulin Rabbit mAb (A6830) at dilution of 1:200 (40x lens). High pressure antigen retrieval performed with 0.01M Citrate Bufferr (pH 6.0) prior to IHC staining.

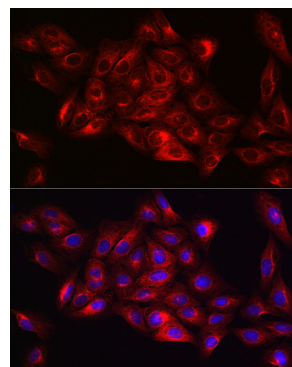
## Validation Data



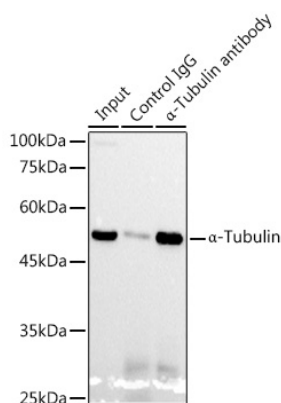
Immunofluorescence analysis of NIH/3T3 cells using  $\alpha$ -Tubulin Rabbit mAb (A6830) at dilution of 1:100 (40x lens). Secondary antibody: Cy3 Goat Anti-Rabbit IgG (H+L) (AS007) at 1:500 dilution. Blue: DAPI for nuclear staining.



Immunofluorescence analysis of PC-12 cells using  $\alpha$ -Tubulin Rabbit mAb (A6830) at dilution of 1:100 (40x lens). Secondary antibody: Cy3 Goat Anti-Rabbit IgG (H+L) (AS007) at 1:500 dilution. Blue: DAPI for nuclear staining.



Immunofluorescence analysis of U2OS cells using  $\alpha$ -Tubulin Rabbit mAb (A6830) at dilution of 1:100 (40x lens). Secondary antibody: Cy3 Goat Anti-Rabbit IgG (H+L) (AS007) at 1:500 dilution. Blue: DAPI for nuclear staining.



Immunoprecipitation analysis of 300  $\mu$ g extracts from HeLa cells using 3  $\mu$ g  $\alpha$ -Tubulin Rabbit mAb (A6830). Western blot was performed from the immunoprecipitate using  $\alpha$ -Tubulin Rabbit mAb (A6830) at a dilution of 1:1000.