

A6517

Leader in Biomolecular Solutions for Life Science



# AGPAT1 Rabbit pAb

Catalog No.: A6517

## Basic Information

### Observed MW

32kDa

### Calculated MW

32kDa

### Category

Polyclonal Antibody

### Applications

WB,IP,ELISA

### Cross-Reactivity

Human,Mouse,Rat

## Background

This gene encodes an enzyme that converts lysophosphatidic acid (LPA) into phosphatidic acid (PA). LPA and PA are two phospholipids involved in signal transduction and in lipid biosynthesis in cells. This enzyme localizes to the endoplasmic reticulum. This gene is located in the class III region of the human major histocompatibility complex. Alternative splicing results in two transcript variants encoding the same protein.

## Recommended Dilutions

WB 1:500 - 1:2000

IP 0.5µg-4µg antibody for  
200µg-400µg extracts of  
whole cells

## Immunogen Information

### Gene ID

10554

### Swiss Prot

Q99943

### Immunogen

Recombinant fusion protein containing a sequence corresponding to amino acids 204-283 of human AGPAT1 (NP\_006402.1).

### Synonyms

G15; LPAATA; LPLAT1; 1-AGPAT1; LPAAT-alpha; AGPAT1

## Contact



[www.abclonal.com](http://www.abclonal.com)

## Product Information

### Source

Rabbit

### Isotype

IgG

### Purification

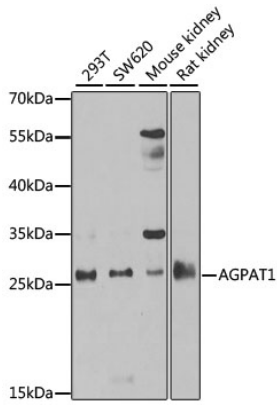
Affinity purification

### Storage

Store at -20°C. Avoid freeze / thaw cycles.

Buffer: PBS with 0.02% sodium azide,50% glycerol,pH7.3.

## Validation Data



Western blot analysis of various lysates using AGPAT1 Rabbit pAb (A6517) at 1:1000 dilution. Secondary antibody: HRP Goat Anti-Rabbit IgG (H+L) (AS014) at 1:10000 dilution. Lysates/proteins: 25µg per lane. Blocking buffer: 3% nonfat dry milk in TBST. Detection: ECL Basic Kit (RM00020). Exposure time: 90s.

Immunoprecipitation analysis of 200 µg extracts of 293T cells, using 3 µg AGPAT1 antibody (A6517). Western blot was performed from the immunoprecipitate using AGPAT1 antibody (A6517) at a dilution of 1:1000.

