

A6278

Leader in Biomolecular Solutions for Life Science



## ADSL Rabbit pAb

Catalog No.: A6278

3 Publications

### Basic Information

#### Observed MW

55kDa

#### Calculated MW

55kDa

#### Category

Polyclonal Antibody

#### Applications

WB, IF/ICC, ELISA

#### Cross-Reactivity

Human, Mouse, Rat

### Background

The protein encoded by this gene belongs to the lyase 1 family. It is an essential enzyme involved in purine metabolism, and catalyzes two non-sequential reactions in the de novo purine biosynthetic pathway: the conversion of succinylaminoimidazole carboxamide ribotide (SAICAR) to aminoimidazole carboxamide ribotide (AICAR) and the conversion of adenylosuccinate (S-AMP) to adenosine monophosphate (AMP). Mutations in this gene are associated with adenylosuccinase deficiency (ADSLD), a disorder marked with psychomotor retardation, epilepsy or autistic features. Alternatively spliced transcript variants have been found for this gene.

### Recommended Dilutions

WB	1:500 - 1:1000
IF/ICC	1:20 - 1:100

### Immunogen Information

#### Gene ID

158

#### Swiss Prot

P30566

#### Immunogen

Recombinant fusion protein containing a sequence corresponding to amino acids 1-310 of human ADSL (NP\_000017.1).

#### Synonyms

ASL; AMPS; ASASE; ADSL

### Contact



[www.abclonal.com](http://www.abclonal.com)

### Product Information

#### Source

Rabbit

#### Isotype

IgG

#### Purification

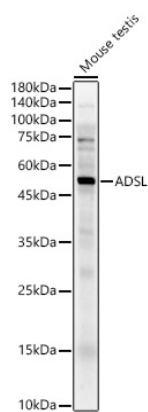
Affinity purification

#### Storage

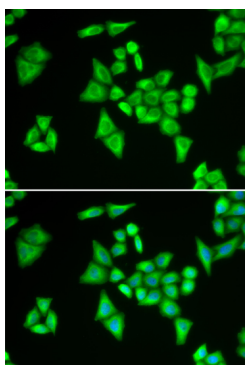
Store at -20°C. Avoid freeze / thaw cycles.

Buffer: PBS with 0.02% sodium azide, 50% glycerol, pH 7.3.

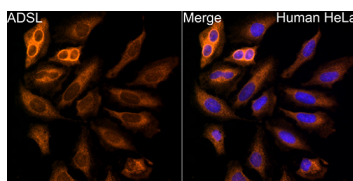
## Validation Data



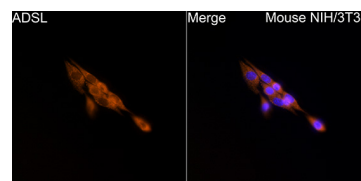
Western blot analysis of lysates from Mouse testis, using ADSL Rabbit pAb (A6278) at 1:700 dilution.  
 Secondary antibody: HRP Goat Anti-Rabbit IgG (H+L) (AS014) at 1:10000 dilution.  
 Lysates/proteins: 25µg per lane.  
 Blocking buffer: 3% nonfat dry milk in TBST.  
 Detection: ECL Enhanced Kit (RM00021).  
 Exposure time: 30s.



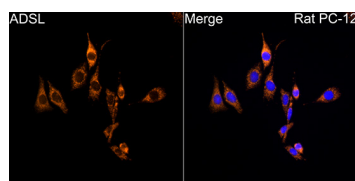
Immunofluorescence analysis of HeLa cells using ADSL Rabbit pAb (A6278). Secondary antibody: Cy3 Goat Anti-Rabbit IgG (H+L) (AS007) at 1:500 dilution. Blue: DAPI for nuclear staining.



Immunofluorescence analysis of HeLa cells using ADSL Rabbit pAb (A6278) at dilution of 1:50 (40x lens). Secondary antibody: Cy3 Goat Anti-Rabbit IgG (H+L) (AS007) at 1:500 dilution. Blue: DAPI for nuclear staining.



Immunofluorescence analysis of NIH/3T3 cells using ADSL Rabbit pAb (A6278) at dilution of 1:50 (40x lens). Secondary antibody: Cy3 Goat Anti-Rabbit IgG (H+L) (AS007) at 1:500 dilution. Blue: DAPI for nuclear staining.



Immunofluorescence analysis of PC-12 cells using ADSL Rabbit pAb (A6278) at dilution of 1:50 (40x lens). Secondary antibody: Cy3 Goat Anti-Rabbit IgG (H+L) (AS007) at 1:500 dilution. Blue: DAPI for nuclear staining.