

PLIN2 Rabbit pAb

Catalog No.: A6276 **3 Publications**

Basic Information

Catalog No.

A6276

Observed MW

48kDa

Calculated MW

48kDa

Category

Primary antibody

Applications

WB, IHC, IF

Cross-Reactivity

Human, Mouse, Rat

Recommended Dilutions

WB	1:500 - 1:2000
IHC	1:50 - 1:200
IF	1:50 - 1:200

Contact

 | www.abclonal.com

Background

The protein encoded by this gene belongs to the perilipin family, members of which coat intracellular lipid storage droplets. This protein is associated with the lipid globule surface membrane material, and maybe involved in development and maintenance of adipose tissue. However, it is not restricted to adipocytes as previously thought, but is found in a wide range of cultured cell lines, including fibroblasts, endothelial and epithelial cells, and tissues, such as lactating mammary gland, adrenal cortex, Sertoli and Leydig cells, and hepatocytes in alcoholic liver cirrhosis, suggesting that it may serve as a marker of lipid accumulation in diverse cell types and diseases. Alternatively spliced transcript variants have been found for this gene.

Immunogen Information

Gene ID	Swiss Prot
123	Q99541

Immunogen

Recombinant fusion protein containing a sequence corresponding to amino acids 168-437 of human PLIN2 (NP_001113.2).

Synonyms

PLIN2;ADFP;ADRP

Product Information

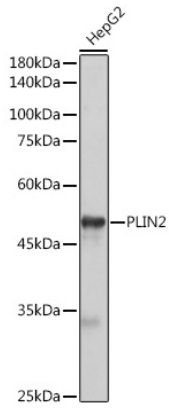
Source	Isotype	Purification
Rabbit	IgG	Affinity purification

Storage

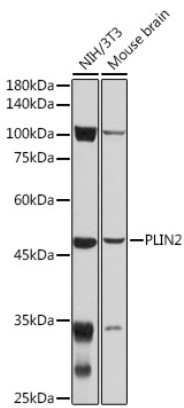
Store at -20°C. Avoid freeze / thaw cycles.

Buffer: PBS with 0.02% sodium azide, 50% glycerol, pH7.3.

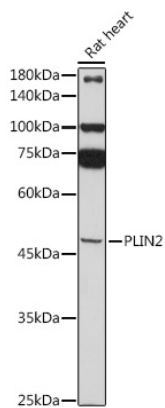
Validation Data



Western blot analysis of extracts of HepG2 cells, using PLIN2 antibody (A6276) at 1:1000 dilution.
Secondary antibody: HRP Goat Anti-Rabbit IgG (H+L) (AS014) at 1:10000 dilution.
Lysates/proteins: 25ug per lane.
Blocking buffer: 3% nonfat dry milk in TBST.
Detection: ECL Basic Kit (RM00020).
Exposure time: 5s.

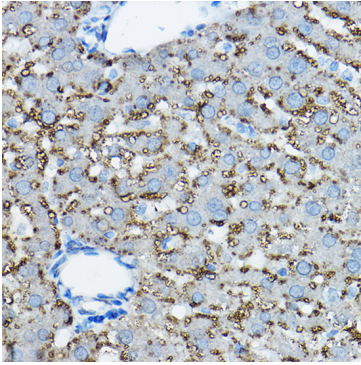


Western blot analysis of extracts of various cell lines, using PLIN2 antibody (A6276) at 1:1000 dilution.
Secondary antibody: HRP Goat Anti-Rabbit IgG (H+L) (AS014) at 1:10000 dilution.
Lysates/proteins: 25ug per lane.
Blocking buffer: 3% nonfat dry milk in TBST.
Detection: ECL Basic Kit (RM00020).
Exposure time: 30s.

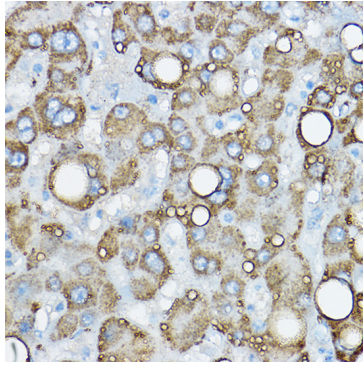


Western blot analysis of extracts of Rat heart, using PLIN2 antibody (A6276) at 1:1000 dilution.
Secondary antibody: HRP Goat Anti-Rabbit IgG (H+L) (AS014) at 1:10000 dilution.
Lysates/proteins: 25ug per lane.
Blocking buffer: 3% nonfat dry milk in TBST.
Detection: ECL Basic Kit (RM00020).
Exposure time: 90s.

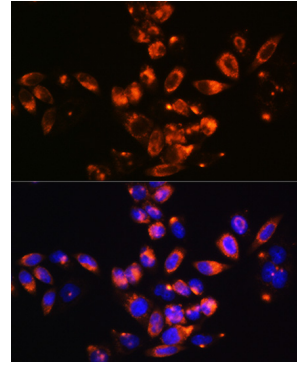
Validation Data



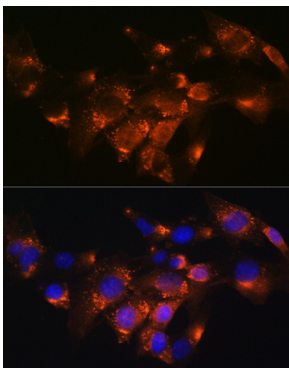
Immunohistochemistry of paraffin-embedded rat liver using PLIN2 Rabbit pAb (A6276) at dilution of 1:50 (40x lens).



Immunohistochemistry of paraffin-embedded human liver using PLIN2 Rabbit pAb (A6276) at dilution of 1:50 (40x lens).



Immunofluorescence analysis of HeLa cells using PLIN2 Rabbit pAb (A6276) at dilution of 1:100 (40x lens). Blue: DAPI for nuclear staining.



Immunofluorescence analysis of NIH-3T3 cells using PLIN2 Rabbit pAb (A6276) at dilution of 1:100 (40x lens). Blue: DAPI for nuclear staining.