

A6238

Leader in Biomolecular Solutions for Life Science



AKT1S1/PRAS40 Rabbit pAb

Catalog No.: A6238 **2 Publications**

Basic Information

Observed MW

50kDa

Calculated MW

27kDa

Category

Polyclonal Antibody

Applications

WB,IHC-P,IF/ICC,ELISA

Cross-Reactivity

Human,Mouse,Rat

Background

AKT1S1 is a proline-rich substrate of AKT (MIM 164730) that binds 14-3-3 protein (see YWHAH, MIM 113508) when phosphorylated (Kovacina et al., 2003 [PubMed 12524439]).

Recommended Dilutions

WB	1:500 - 1:2000
IHC-P	1:50 - 1:100
IF/ICC	1:50 - 1:100

Immunogen Information

Gene ID

84335

Swiss Prot

Q96B36

Immunogen

A synthetic peptide corresponding to a sequence within amino acids 150-256 of human AKT1S1/PRAS40 (NP_001092103.1).

Synonyms

Lobe; PRAS40; AKT1S1/PRAS40

Contact



www.abclonal.com

Product Information

Source

Rabbit

Isotype

IgG

Purification

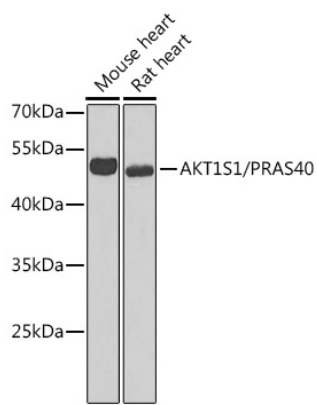
Affinity purification

Storage

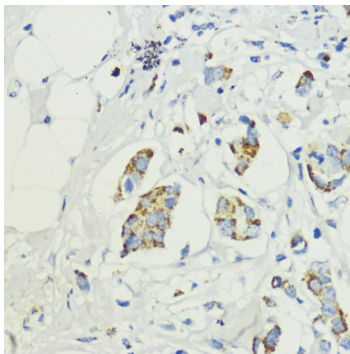
Store at -20°C. Avoid freeze / thaw cycles.

Buffer: PBS with 0.01% thimerosal,50% glycerol,pH7.3.

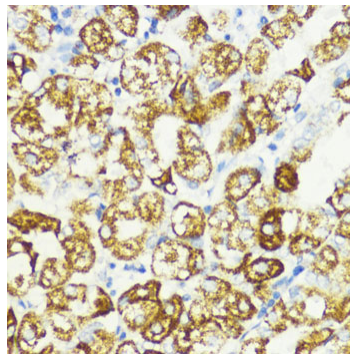
Validation Data



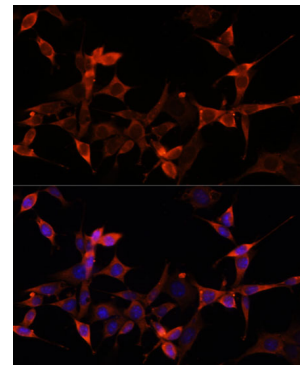
Western blot analysis of various lysates using AKT1S1/PRAS40 Rabbit pAb (A6238) at 1:1000 dilution.
Secondary antibody: HRP Goat Anti-Rabbit IgG (H+L) (AS014) at 1:10000 dilution.
Lysates/proteins: 25µg per lane.
Blocking buffer: 3% nonfat dry milk in TBST.
Detection: ECL Enhanced Kit (RM00021).
Exposure time: 90s.



Immunohistochemistry analysis of AKT1S1/PRAS40 in paraffin-embedded human mammary cancer using AKT1S1/PRAS40 Rabbit pAb (A6238) at dilution of 1:200 (40x lens). Perform microwave antigen retrieval with 10 mM PBS buffer pH 7.2 before commencing with IHC staining protocol.



Immunohistochemistry analysis of AKT1S1/PRAS40 in paraffin-embedded human stomach using AKT1S1/PRAS40 Rabbit pAb (A6238) at dilution of 1:200 (40x lens). Perform microwave antigen retrieval with 10 mM PBS buffer pH 7.2 before commencing with IHC staining protocol.



Immunofluorescence analysis of NIH-3T3 cells using AKT1S1/PRAS40 Rabbit pAb (A6238) at dilution of 1:100 (40x lens). Secondary antibody: Cy3 Goat Anti-Rabbit IgG (H+L) (AS007) at 1:500 dilution. Blue: DAPI for nuclear staining.