

# CUL4B Rabbit pAb

Catalog No.: A6198 **1 Publications**

## Basic Information

### Observed MW

100kDa

### Calculated MW

104kDa

### Category

Primary antibody

### Applications

WB,IF/ICC,IP

### Cross-Reactivity

Human, Mouse

## Background

This gene is a member of the cullin family. The encoded protein forms a complex that functions as an E3 ubiquitin ligase and catalyzes the polyubiquitination of specific protein substrates in the cell. The protein interacts with a ring finger protein, and is required for the proteolysis of several regulators of DNA replication including chromatin licensing and DNA replication factor 1 and cyclin E. Multiple transcript variants encoding different isoforms have been found for this gene.

## Recommended Dilutions

<b>WB</b>	1:500 - 1:2000
<b>IF/ICC</b>	1:20 - 1:100
<b>IP</b>	1:20 - 1:100

## Immunogen Information

<b>Gene ID</b>	<b>Swiss Prot</b>
8450	Q13620

### Immunogen

Recombinant protein of human CUL4B

### Synonyms

SFM2; MRXSC; CUL-4B; MRXHF2; MRXS15; CUL4B

## Contact

 | [www.abclonal.com](http://www.abclonal.com)

## Product Information

<b>Source</b>	<b>Isotype</b>	<b>Purification</b>
Rabbit	IgG	Affinity purification

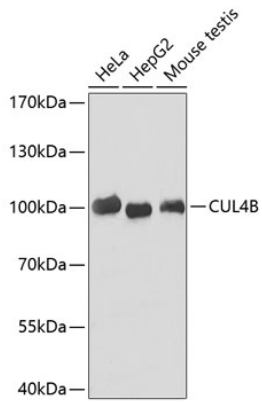
### Storage

Store at -20°C. Avoid freeze / thaw cycles.

Buffer: PBS with 0.02% sodium azide,50% glycerol,pH7.3.

## Validation Data

---



Western blot analysis of extracts of various cell lines, using CUL4B antibody (A6198).  
Secondary antibody: HRP Goat Anti-Rabbit IgG (H+L) (AS014) at 1:10000 dilution.  
Lysates/proteins: 25µg per lane.  
Blocking buffer: 3% nonfat dry milk in TBST.