

TNRC6A Rabbit pAb

Catalog No.: A6115

Basic Information

Observed MW

180kDa

Calculated MW

17kDa/36kDa/182kDa/205kDa/206kDa
/210kDa

Category

Primary antibody

Applications

WB,IF/ICC

Cross-Reactivity

Human, Mouse, Rat

Background

This gene encodes a member of the trinucleotide repeat containing 6 protein family. The protein functions in post-transcriptional gene silencing through the RNA interference (RNAi) and microRNA pathways. The protein associates with messenger RNAs and Argonaute proteins in cytoplasmic bodies known as GW-bodies or P-bodies. Inhibiting expression of this gene delocalizes other GW-body proteins and impairs RNAi and microRNA-induced gene silencing.

Recommended Dilutions

WB	1:500 - 1:1000
IF/ICC	1:50 - 1:100

Immunogen Information

Gene ID	Swiss Prot
27327	Q8NDV7

Immunogen

A synthetic peptide corresponding to a sequence within amino acids 950-1050 of human TNRC6A (NP_055309.2).

Synonyms

TNRC6A;CAGH26;GW1;GW182;TNRC6

Contact

 | www.abclonal.com

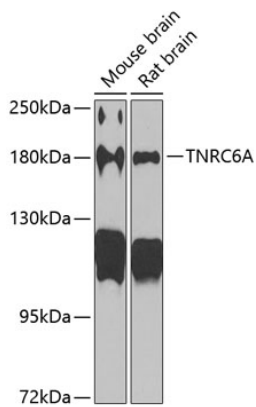
Product Information

Source	Isotype	Purification
Rabbit	IgG	Affinity purification

Storage

Store at -20°C. Avoid freeze / thaw cycles.
Buffer: PBS with 0.02% sodium azide,50% glycerol,pH7.3.

Validation Data



Western blot analysis of extracts of various cell lines, using TNRC6A antibody (A6115) at 1:1000 dilution.

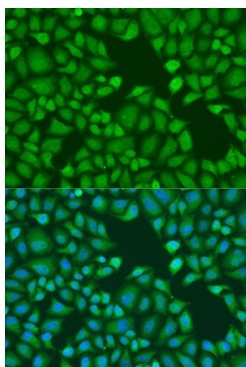
Secondary antibody: HRP Goat Anti-Rabbit IgG (H+L) (AS014) at 1:10000 dilution.

Lysates/proteins: 25ug per lane.

Blocking buffer: 3% nonfat dry milk in TBST.

Detection: ECL Basic Kit (RM00020).

Exposure time: 90s.



Immunofluorescence analysis of U2OS cells using TNRC6A antibody (A6115) at dilution of 1:100. Blue: DAPI for nuclear staining.