

YTHDF1 Rabbit pAb

Catalog No.: A5985

Basic Information

Observed MW

61kDa

Calculated MW

61kDa

Category

Primary antibody

Applications

WB,IP

Cross-Reactivity

Human, Mouse, Rat

Background

Enables N6-methyladenosine-containing RNA binding activity and ribosome binding activity. Involved in mRNA destabilization; positive regulation of translational initiation; and stress granule assembly. Located in P-body and cytoplasmic stress granule.

Recommended Dilutions

WB	1:500 - 1:2000
IP	1:20 - 1:50

Immunogen Information

Gene ID	Swiss Prot
54915	Q9BYJ9

Immunogen

Recombinant protein of human YTHDF1

Synonyms

DF1; C20orf21; YTHDF1

Contact

 | www.abclonal.com

Product Information

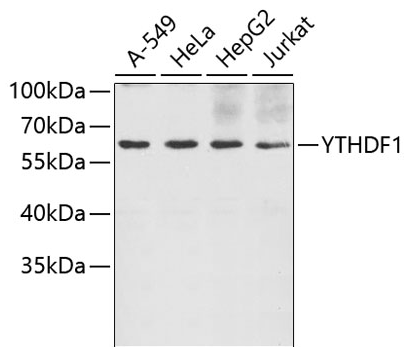
Source	Isotype	Purification
Rabbit	IgG	Affinity purification

Storage

Store at -20°C. Avoid freeze / thaw cycles.

Buffer: PBS with 0.02% sodium azide,50% glycerol,pH7.3.

Validation Data



Western blot analysis of extracts of various cell lines, using YTHDF1 antibody (A5985).
Secondary antibody: HRP Goat Anti-Rabbit IgG (H+L) (AS014) at 1:10000 dilution.
Lysates/proteins: 25µg per lane.
Blocking buffer: 3% nonfat dry milk in TBST.