

A5982

Leader in Biomolecular Solutions for Life Science



# CYP26A1 Rabbit mAb

Catalog No.: A5982 **Recombinant**

## Basic Information

### Observed MW

56kDa

### Calculated MW

56kDa

### Category

SMab Recombinant Monoclonal Antibody

### Applications

WB,IHC-P,IF/ICC,ELISA

### Cross-Reactivity

Human,Mouse,Rat

### CloneNo number

ARC2126

## Background

This gene encodes a member of the cytochrome P450 superfamily of enzymes. The cytochrome P450 proteins are monooxygenases which catalyze many reactions involved in drug metabolism and synthesis of cholesterol, steroids and other lipids. This endoplasmic reticulum protein acts on retinoids, including all-trans-retinoic acid (RA), with both 4-hydroxylation and 18-hydroxylation activities. This enzyme regulates the cellular level of retinoic acid which is involved in regulation of gene expression in both embryonic and adult tissues. Two alternatively spliced transcript variants of this gene, which encode the distinct isoforms, have been reported.

## Recommended Dilutions

WB	1:500 - 1:1000
IHC-P	1:50 - 1:200
IF/ICC	1:50 - 1:200

## Immunogen Information

<b>Gene ID</b>	<b>Swiss Prot</b>
1592	O43174

### Immunogen

Recombinant fusion protein containing a sequence corresponding to amino acids 201-450 of human CYP26A1 (O43174).

### Synonyms

CP26; CYP26; P450RAI; P450RAI1; CYP26A1

## Contact



[www.abclonal.com](http://www.abclonal.com)

## Product Information

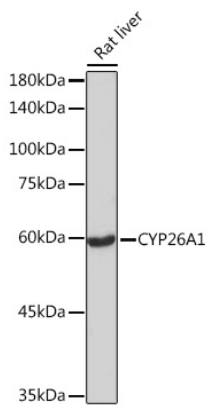
<b>Source</b>	<b>Isotype</b>	<b>Purification</b>
Rabbit	IgG	Affinity purification

### Storage

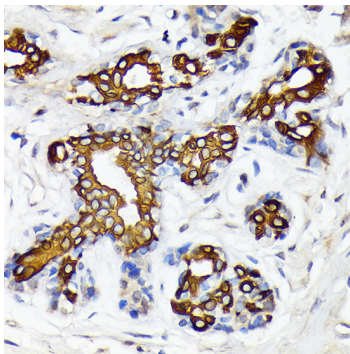
Store at -20°C. Avoid freeze / thaw cycles.

Buffer: PBS with 0.02% sodium azide,0.05% BSA,50% glycerol,pH7.3.

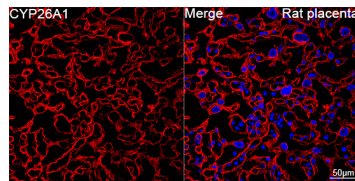
## Validation Data



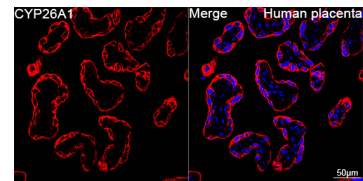
Western blot analysis of lysates from Rat liver, using CYP26A1 Rabbit mAb (A5982) at 1:1000 dilution. Secondary antibody: HRP Goat Anti-Rabbit IgG (H+L) (AS014) at 1:10000 dilution. Lysates/proteins: 25µg per lane. Blocking buffer: 3% nonfat dry milk in TBST. Detection: ECL Basic Kit (RM00020). Exposure time: 180s.



Immunohistochemistry analysis of CYP26A1 in paraffin-embedded human breast using CYP26A1 Rabbit mAb (A5982) at dilution of 1:100 (40x lens). Perform microwave antigen retrieval with 10 mM Tris/EDTA buffer pH 9.0 before commencing with IHC staining protocol.



Confocal imaging of paraffin-embedded Rat placenta using CYP26A1 Rabbit mAb (A5982, dilution 1:100) followed by a further incubation with Cy3 Goat Anti-Rabbit IgG (H+L) (AS007, dilution 1:500) (Red). DAPI was used for nuclear staining (Blue). Objective: 40x. Perform high pressure antigen retrieval with 0.01 M citrate buffer (pH 6.0) prior to IF staining.



Confocal imaging of paraffin-embedded Human placenta using CYP26A1 Rabbit mAb (A5982, dilution 1:100) followed by a further incubation with Cy3 Goat Anti-Rabbit IgG (H+L) (AS007, dilution 1:500) (Red). DAPI was used for nuclear staining (Blue). Objective: 40x. Perform high pressure antigen retrieval with 0.01 M citrate buffer (pH 6.0) prior to IF staining.