

TFRC Rabbit pAb

Catalog No.: A5865 **5 Publications**

Basic Information

Catalog No.

A5865

Observed MW

100kDa

Calculated MW

84kDa

Category

Primary antibody

Applications

WB, IHC, IF, IP


Cross-Reactivity

Human, Mouse, Rat

Recommended Dilutions

WB	1:500 - 1:2000
IHC	1:50 - 1:200
IF	1:50 - 1:200
IP	1:50 - 1:200

Contact

 | www.abclonal.com

Background

This gene encodes a cell surface receptor necessary for cellular iron uptake by the process of receptor-mediated endocytosis. This receptor is required for erythropoiesis and neurologic development. Multiple alternatively spliced variants have been identified.

Immunogen Information

Gene ID

7037

Swiss Prot

P02786

Immunogen

Recombinant fusion protein containing a sequence corresponding to amino acids 1-140 of human TFRC (NP_001121620.1).

Synonyms

TFRC;CD71;IMD46;T9;TFR;TFR1;TR;TRFR;p90

Product Information

Source

Rabbit

Isotype

IgG

Purification

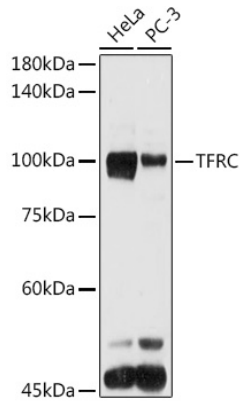
Affinity purification

Storage

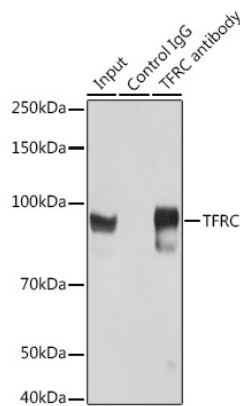
Store at -20°C. Avoid freeze / thaw cycles.

Buffer: PBS with 0.02% sodium azide,50% glycerol,pH7.3.

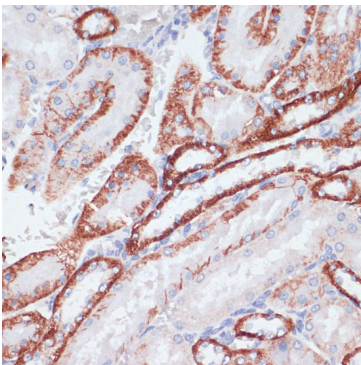
Validation Data



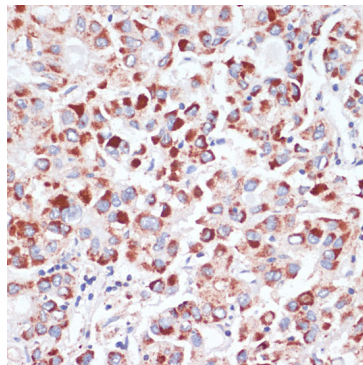
Western blot analysis of extracts of various cell lines, using TFRC antibody (A5865) at 1:1000 dilution. Secondary antibody: HRP Goat Anti-Rabbit IgG (H+L) (AS014) at 1:10000 dilution. Lysates/proteins: 25ug per lane. Blocking buffer: 3% nonfat dry milk in TBST. Detection: ECL Basic Kit (RM00020). Exposure time: 90s.



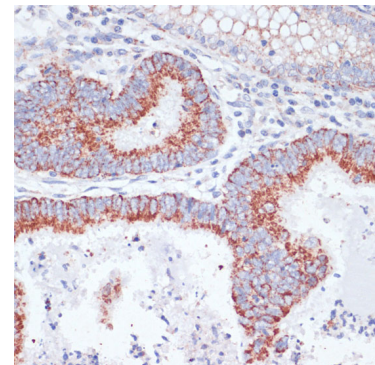
Immunoprecipitation analysis of 200ug extracts of Jurkat cells using 3ug TFRC antibody (A5865). Western blot was performed from the immunoprecipitate using TFRC antibody (A5865) at a dilution of 1:1000.



Immunohistochemistry of paraffin-embedded rat kidney using TFRC antibody (A5865) at dilution of 1:100 (40x lens).

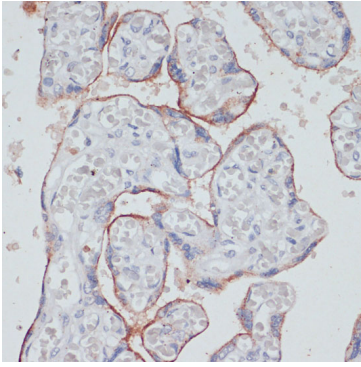


Immunohistochemistry of paraffin-embedded human liver cancer using TFRC antibody (A5865) at dilution of 1:100 (40x lens).

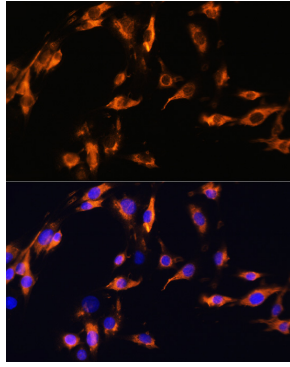


Immunohistochemistry of paraffin-embedded human colon carcinoma using TFRC antibody (A5865) at dilution of 1:100 (40x lens).

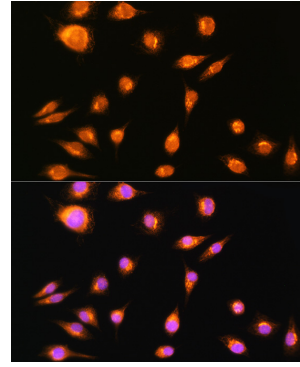
Validation Data



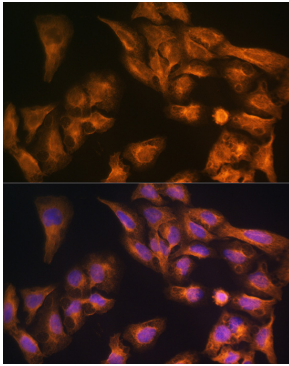
Immunohistochemistry of paraffin-embedded human placenta using TFRC antibody (A5865) at dilution of 1:100 (40x lens).



Immunofluorescence analysis of C6 cells using TFRC Rabbit pAb (A5865) at dilution of 100 (40x lens). Blue: DAPI for nuclear staining.



Immunofluorescence analysis of L929 cells using TFRC Rabbit pAb (A5865) at dilution of 100 (40x lens). Blue: DAPI for nuclear staining.



Immunofluorescence analysis of U-2 OS cells using TFRC Rabbit pAb (A5865) at dilution of 100 (40x lens). Blue: DAPI for nuclear staining.