

A5811

Leader in Biomolecular Solutions for Life Science



BTAf1 Rabbit pAb

Catalog No.: A5811

Basic Information

Observed MW

250kDa

Calculated MW

207kDa

Category

Mouse Monoclonal Antibody

Applications

WB,IP,ChIP,ELISA

Cross-Reactivity

Human,Rat

Background

This gene encodes a TAF (TATA box-binding protein-associated factor), which associates with TBP (TATA box-binding protein) to form the B-TFIID complex that is required for transcription initiation of genes by RNA polymerase II. This TAF has DNA-dependent ATPase activity, which drives the dissociation of TBP from DNA, freeing the TBP to associate with other TATA boxes or TATA-less promoters.

Recommended Dilutions

WB 1:500 - 1:2000

IP 0.5µg-4µg antibody for
200µg-400µg extracts of
whole cells

ChIP 5µg antibody for
10µg-15µg of Chromatin

Immunogen Information

Gene ID

9044

Swiss Prot

O14981

Immunogen

Recombinant fusion protein containing a sequence corresponding to amino acids 1600-1849 of human BTAf1 (NP_003963.1).

Synonyms

MOT1; TAF172; TAFII170; TAF(II)170; BTAf1

Contact



www.abclonal.com

Product Information

Source

Rabbit

Isotype

IgG

Purification

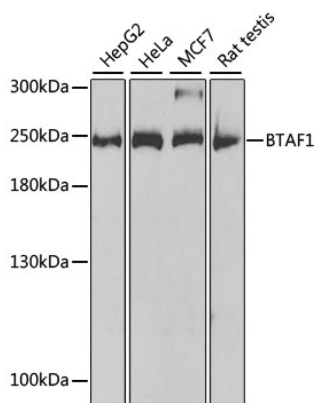
Affinity purification

Storage

Store at -20°C. Avoid freeze / thaw cycles.

Buffer: PBS with 0.02% sodium azide,50% glycerol,pH7.3.

Validation Data



Western blot analysis of various lysates using BTAF1 Rabbit pAb (A5811) at 1:1000 dilution. Secondary antibody: HRP Goat Anti-Rabbit IgG (H+L) (AS014) at 1:10000 dilution. Lysates/proteins: 25µg per lane. Blocking buffer: 3% nonfat dry milk in TBST. Detection: ECL Basic Kit (RM00020).

Immunoprecipitation analysis of 150 µg extracts of HeLa cells using 3 µg BTAF1 antibody (A5811). Western blot was performed from the immunoprecipitate using BTAF1 antibody (A5811) at a dilution of 1:500.

