

# CD36/SR-B3 Rabbit pAb

Catalog No.: A5792 **5 Publications**

## Basic Information

### Catalog No.

A5792

### Observed MW

85kDa/90kDa

### Calculated MW

32kDa/46kDa/48kDa/53kDa

### Category

Primary antibody

### Applications

WB

### Cross-Reactivity

Human, Mouse, Rat

## Recommended Dilutions

**WB** 1:500 - 1:2000

## Background

The protein encoded by this gene is the fourth major glycoprotein of the platelet surface and serves as a receptor for thrombospondin in platelets and various cell lines. Since thrombospondins are widely distributed proteins involved in a variety of adhesive processes, this protein may have important functions as a cell adhesion molecule. It binds to collagen, thrombospondin, anionic phospholipids and oxidized LDL. It directly mediates cytoadherence of Plasmodium falciparum parasitized erythrocytes and it binds long chain fatty acids and may function in the transport and/or as a regulator of fatty acid transport. Mutations in this gene cause platelet glycoprotein deficiency. Multiple alternatively spliced transcript variants have been found for this gene.

## Immunogen Information

### Gene ID

948

### Swiss Prot

P16671

### Immunogen

Recombinant fusion protein containing a sequence corresponding to amino acids 30-270 of human CD36/SR-B3/SR-B3 (NP\_001120916.1).

### Synonyms

BDPLT10;CHDS7;FAT;GP3B;GP4;GPIV;PASIV;SCARB3;CD36

## Contact

 | [www.abclonal.com](http://www.abclonal.com)

## Product Information

### Source

Rabbit

### Isotype

IgG

### Purification

Affinity purification

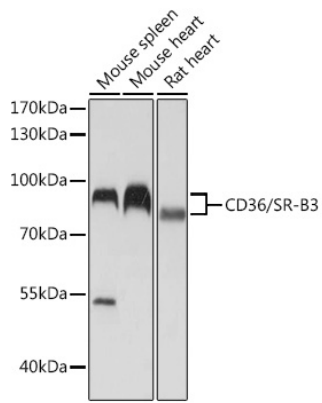
### Storage

Store at -20°C. Avoid freeze / thaw cycles.

Buffer: PBS with 0.02% sodium azide, 50% glycerol, pH7.3.

## Validation Data

---



Western blot analysis of extracts of various cell lines, using CD36/SR-B3/SR-B3 antibody (A5792) at 1:1000 dilution.

Secondary antibody: HRP Goat Anti-Rabbit IgG (H+L) (AS014) at 1:10000 dilution.

Lysates/proteins: 25ug per lane.

Blocking buffer: 3% nonfat dry milk in TBST.

Detection: ECL Basic Kit (RM00020).

Exposure time: 5s.