

A5750

Leader in Biomolecular Solutions for Life Science



Mitofusin 2 Rabbit pAb

Catalog No.: A5750 **3 Publications**

Basic Information

Observed MW

86kDa

Calculated MW

86kDa

Category

Polyclonal Antibody

Applications

WB,IP

Cross-Reactivity

Human,Mouse,Rat

Background

This gene encodes a mitochondrial membrane protein that participates in mitochondrial fusion and contributes to the maintenance and operation of the mitochondrial network. This protein is involved in the regulation of vascular smooth muscle cell proliferation, and it may play a role in the pathophysiology of obesity. Mutations in this gene cause Charcot-Marie-Tooth disease type 2A2, and hereditary motor and sensory neuropathy VI, which are both disorders of the peripheral nervous system. Defects in this gene have also been associated with early-onset stroke. Two transcript variants encoding the same protein have been identified.

Recommended Dilutions

WB 1:1000 - 1:4000

IP 1:20 - 1:50

Immunogen Information

Gene ID

9927

Swiss Prot

O95140

Immunogen

Recombinant protein of human Mitofusin 2

Synonyms

HSG; MARF; CMT2A; CPRP1; CMT2A2; HMSN6A; CMT2A2A; CMT2A2B; Mitofusin 2

Contact



www.abclonal.com

Product Information

Source

Rabbit

Isotype

IgG

Purification

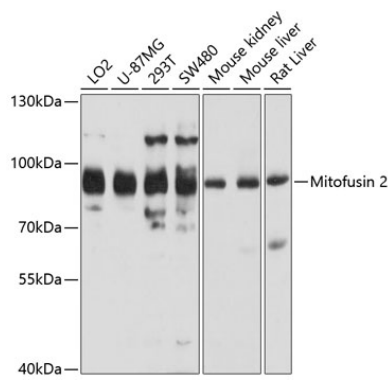
Affinity purification

Storage

Store at -20°C. Avoid freeze / thaw cycles.

Buffer: PBS with 0.02% sodium azide,50% glycerol,pH7.3.

Validation Data



Western blot analysis of various lysates using Mitofusin 2 Rabbit pAb (A5750) at 1:1000 dilution.
Secondary antibody: HRP Goat Anti-Rabbit IgG (H+L) (AS014) at 1:10000 dilution.
Lysates/proteins: 25µg per lane.
Blocking buffer: 3% nonfat dry milk in TBST.
Detection: ECL Basic Kit (RM00020).
Exposure time: 5s.