

A5661

Leader in Biomolecular Solutions for Life Science



ABCG2 Rabbit pAb

Catalog No.: A5661 **7 Publications**

Basic Information

Observed MW

65-80kDa

Calculated MW

72kDa

Category

Polyclonal Antibody

Applications

WB,IF/ICC,ELISA

Cross-Reactivity

Human,Mouse,Rat

Background

The membrane-associated protein encoded by this gene is included in the superfamily of ATP-binding cassette (ABC) transporters. ABC proteins transport various molecules across extra- and intra-cellular membranes. ABC genes are divided into seven distinct subfamilies (ABC1, MDR/TAP, MRP, ALD, OABP, GCN20, White). This protein is a member of the White subfamily. Alternatively referred to as a breast cancer resistance protein, this protein functions as a xenobiotic transporter which may play a major role in multi-drug resistance. It likely serves as a cellular defense mechanism in response to mitoxantrone and anthracycline exposure. Significant expression of this protein has been observed in the placenta, which may suggest a potential role for this molecule in placenta tissue. Multiple transcript variants encoding different isoforms have been found for this gene.

Recommended Dilutions

WB	1:1000 - 1:5000
IF/ICC	1:50 - 1:200

Immunogen Information

Gene ID

9429

Swiss Prot

Q9UNQ0

Immunogen

A synthetic peptide corresponding to a sequence within amino acids 100-200 of human ABCG2 (NP_004818.2).

Synonyms

MRX; MXR; ABCP; BCRP; BMDP; MXR1; ABC15; BCRP1; CD338; GOUT1; MXR-1; CDw338; CDw388; UAQTL1; EST157481; ABCG2

Contact



www.abclonal.com

Product Information

Source

Rabbit

Isotype

IgG

Purification

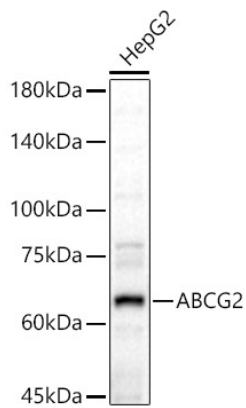
Affinity purification

Storage

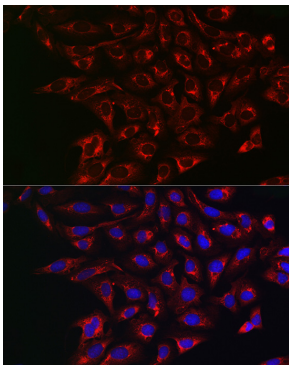
Store at -20°C. Avoid freeze / thaw cycles.

Buffer: PBS with 0.05% proclin300,50% glycerol,pH7.3.

Validation Data



Western blot analysis of HepG2, using ABCG2 antibody (A5661) at 1:2000 dilution.
Secondary antibody: HRP Goat Anti-Rabbit IgG (H+L) (AS014) at 1:10000 dilution.
Lysates/proteins: 25µg per lane.
Blocking buffer: 3% nonfat dry milk in TBST.
Detection: ECL Basic Kit (RM00020).
Exposure time: 20s.



Immunofluorescence analysis of U2OS cells using ABCG2 Rabbit pAb (A5661) at dilution of 1:200 (40x lens). Blue: DAPI for nuclear staining.