

A5473

Leader in Biomolecular Solutions for Life Science



# MYL2 Rabbit pAb

Catalog No.: A5473

## Basic Information

### Observed MW

19kDa

### Calculated MW

19kDa

### Category

Polyclonal Antibody

### Applications

WB,IF/ICC,ELISA

### Cross-Reactivity

Human,Mouse,Rat

## Background

This gene encodes a major sarcomeric protein in mammalian striated muscle. The encoded protein plays a role in embryonic heart muscle structure and function, while phosphorylation of the encoded protein is involved in cardiac myosin cycling kinetics, torsion and function in adults. Mutations in this gene are associated with hypertrophic cardiomyopathy 10 and infant-onset myopathy.

## Recommended Dilutions

WB	1:500 - 1:2000
IF/ICC	1:50 - 1:200

## Immunogen Information

<b>Gene ID</b>	<b>Swiss Prot</b>
4633	P10916

### Immunogen

Recombinant fusion protein containing a sequence corresponding to amino acids 1-166 of human MYL2 (NP\_000423.2).

### Synonyms

MLC2; CMH10; MFM12; MLC-2; MLC-2v; MLC-2s/v; MYL2

## Contact

 [www.abclonal.com](http://www.abclonal.com)

## Product Information

<b>Source</b>	<b>Isotype</b>	<b>Purification</b>
Rabbit	IgG	Affinity purification

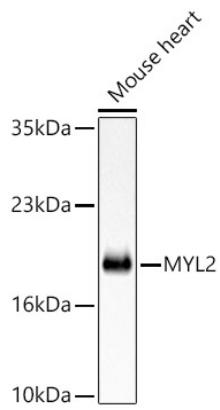
### Storage

Store at -20°C. Avoid freeze / thaw cycles.

Buffer: PBS with 0.02% sodium azide,50% glycerol,pH7.3.

## Validation Data

---



Western blot analysis of lysates from Mouse heart, using MYL2 Rabbit pAb (A5473) at 1:1000 dilution.

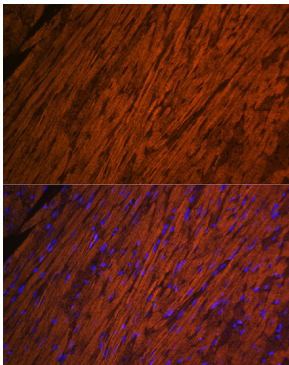
Secondary antibody: HRP Goat Anti-Rabbit IgG (H+L) (AS014) at 1:10000 dilution.

Lysates/proteins: 25ug per lane.

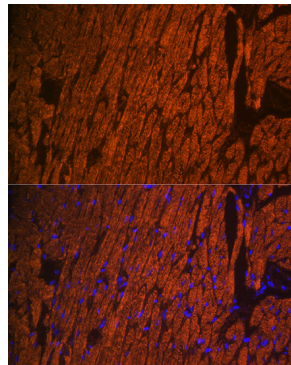
Blocking buffer: 3% nonfat dry milk in TBST.

Detection: ECL Basic Kit (RM00020).

Exposure time: 30s.



Immunofluorescence analysis of paraffin-embedded rat heart using MYL2 Rabbit pAb (A5473) at dilution of 1:100 (40x lens). Secondary antibody: Cy3 Goat Anti-Rabbit IgG (H+L) (AS007) at 1:500 dilution. Blue: DAPI for nuclear staining.



Immunofluorescence analysis of paraffin-embedded mouse heart using MYL2 Rabbit pAb (A5473) at dilution of 1:100 (40x lens). Secondary antibody: Cy3 Goat Anti-Rabbit IgG (H+L) (AS007) at 1:500 dilution. Blue: DAPI for nuclear staining.