

A5471

Leader in Biomolecular Solutions for Life Science



Myoglobin Rabbit pAb

Catalog No.: A5471

1 Publications

Basic Information

Observed MW

17kDa

Calculated MW

17kDa

Category

Polyclonal Antibody

Applications

WB,IF/ICC,ELISA

Cross-Reactivity

Human,Mouse,Rat

Background

This gene encodes a member of the globin superfamily and is predominantly expressed in skeletal and cardiac muscles. The encoded protein forms a monomeric globular haemoprotein that is primarily responsible for the storage and facilitated transfer of oxygen from the cell membrane to the mitochondria. This protein also plays a role in regulating physiological levels of nitric oxide. Multiple transcript variants encoding distinct isoforms exist for this gene.

Recommended Dilutions

WB	1:500 - 1:1000
IF/ICC	1:100 - 1:500

Immunogen Information

Gene ID

4151

Swiss Prot

P02144

Immunogen

Recombinant fusion protein containing a sequence corresponding to amino acids 1-154 of human Myoglobin (NP_005359.1).

Synonyms

MYOSB; PVALB; Myoglobin

Contact



www.abclonal.com

Product Information

Source

Rabbit

Isotype

IgG

Purification

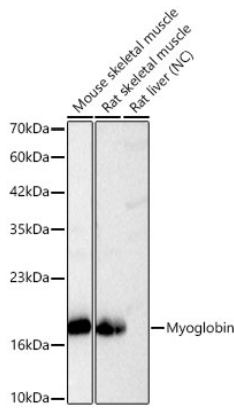
Affinity purification

Storage

Store at -20°C. Avoid freeze / thaw cycles.

Buffer: PBS with 0.02% sodium azide, 50% glycerol, pH7.3.

Validation Data



Western blot analysis of various lysates using Myoglobin Rabbit pAb (A5471) at 1:1000 dilution.

Secondary antibody: HRP Goat Anti-Rabbit IgG (H+L) (AS014) at 1:10000 dilution.

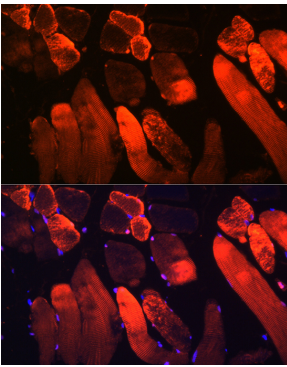
Lysates/proteins: 25 µg per lane.

Blocking buffer: 3% nonfat dry milk in TBST.

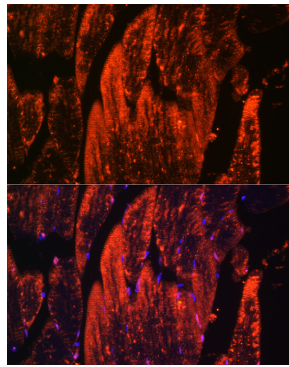
Detection: ECL Basic Kit (RM00020).

Negative control (NC): Rat liver.

Exposure time: 1s.



Immunofluorescence analysis of paraffin-embedded rat skeletal muscle using Myoglobin Rabbit pAb (A5471) at dilution of 1:300 (40x lens). Secondary antibody: Cy3 Goat Anti-Rabbit IgG (H+L) (AS007) at 1:500 dilution. Blue: DAPI for nuclear staining.



Immunofluorescence analysis of paraffin-embedded mouse skeletal muscle using Myoglobin Rabbit pAb (A5471) at dilution of 1:300 (40x lens). Secondary antibody: Cy3 Goat Anti-Rabbit IgG (H+L) (AS007) at 1:500 dilution. Blue: DAPI for nuclear staining.