

A5414

Leader in Biomolecular Solutions for Life Science



PAX4 Rabbit pAb

Catalog No.: A5414

Basic Information

Observed MW

43kDa

Calculated MW

38kDa

Category

Polyclonal Antibody

Applications

WB,ELISA

Cross-Reactivity

Human,Mouse

Background

This gene is a member of the paired box (PAX) family of transcription factors. Members of this gene family typically contain a paired box domain, an octapeptide, and a paired-type homeodomain. These genes play critical roles during fetal development and cancer growth. The paired box 4 gene is involved in pancreatic islet development and mouse studies have demonstrated a role for this gene in differentiation of insulin-producing beta cells.

Recommended Dilutions

WB 1:500 - 1:2000

Immunogen Information

Gene ID

5078

Swiss Prot

O43316

Immunogen

Recombinant fusion protein containing a sequence corresponding to amino acids 50-200 of human PAX4 (NP_006184.2).

Synonyms

KPD; MODY9; PAX4

Contact



www.abclonal.com

Product Information

Source

Rabbit

Isotype

IgG

Purification

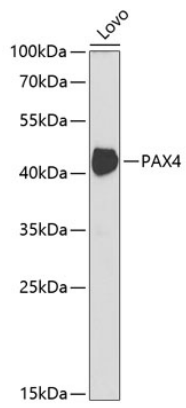
Affinity purification

Storage

Store at -20°C. Avoid freeze / thaw cycles.

Buffer: PBS with 0.02% sodium azide,50% glycerol,pH7.3.

Validation Data



Western blot analysis of extracts of Lovo cells, using PAX4 antibody (A5414) at 1:1000 dilution. Secondary antibody: HRP Goat Anti-Rabbit IgG (H+L) (AS014) at 1:10000 dilution. Lysates/proteins: 25µg per lane. Blocking buffer: 3% nonfat dry milk in TBST. Detection: ECL Enhanced Kit (RM00021). Exposure time: 90s.